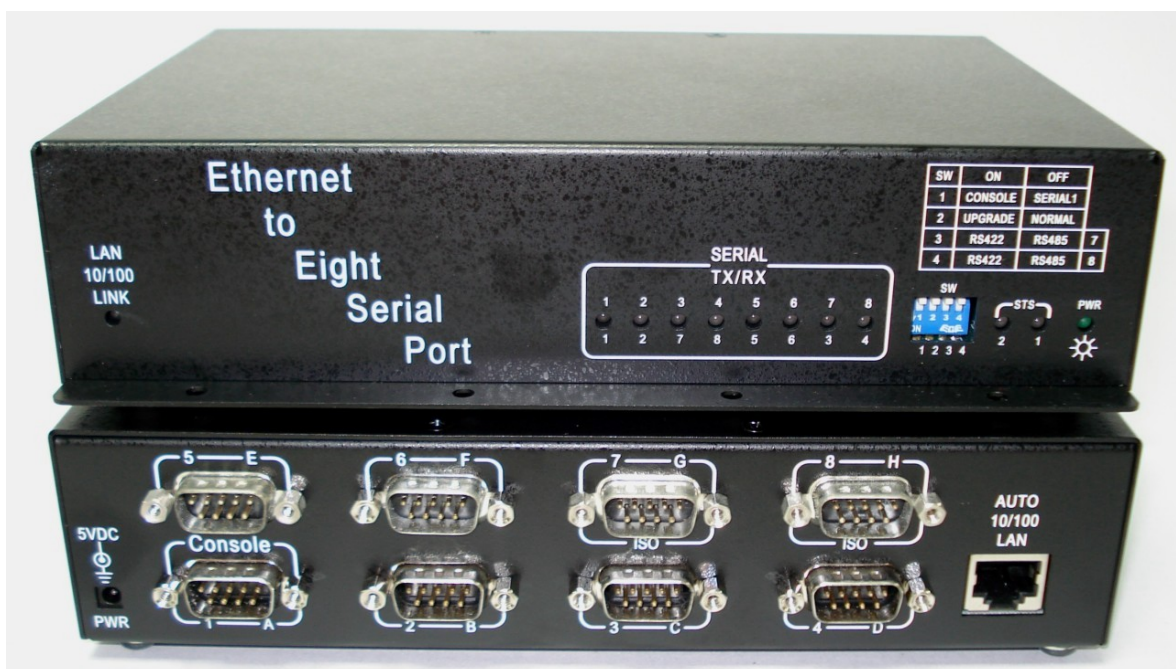


APORT008

IP to Serial Port Converter

- ◆ **10/100Mbps LAN Connection**
- ◆ **8 Ground isolated RS422/485 Port**
- ◆ **Linux based system board**



- ★ **32bit 100MHz RISC CPU** higher performance than 16bit CPU.
- ★ **Auto-detecting** 10/100Mbps Ethernet interface.
- ★ Support WIN 2000/XP/WIN7/8/10 **virtual COM driver**.
- ★ Support UNIX & Linux **real TTY** driver.
- ★ Support **TCP server/Client** mode.
- ★ Support **UDP send/receive** mode.
- ★ Support **WEB, TELNET and terminal setup**.
- ★ Support eight Ground isolated RS422/485 serial port.
- ★ Support Auto-Data-Direction-Control feature in RS485.

APORT008 IP to Serial Port Converter Specification :

Hardware Specification:

- * CPU: 32bit 100MHz MIPS CPU.
- * Flash ROM: 16M Byte.
- * SDRAM: 16M Byte.

LAN connection:

- *Interface: 10/100Mbps 100BaseT
- *Connector: RJ45

Serial port:

- *Interface: Ground isolated RS422/485
 - *connector: DB9 male.
 - *Port Number: 8.
 - *speed: upto 230400bps.
- NOTE: console port share with serial port 1
- NOTE: each serial port can be set to RS422 or RS485 by DIP switch.

Software Compatibility:

- *TCP/IP or UDP/IP connection.
- *WIN 7/8/2000/XP/10 Virtual COM driver.
- *LINUX raw TTY driver.
- *SCO UNIX real TTY driver.

Power Requirement:

- *5VDC @ 1600mA.

Dimension:

205*135*48mm.

Environment:

- *Operating temperature: 5--40 °C.
- *Operating humidity: 10--90%RH.
- *Storage temperature: 0--65 °C.
- *Storage humidity: 5--90%RH.

Other relative product information:

APORT200: IP to two RS232 serial port converter.

APORT020: IP to two ground isolated RS232 serial port converter.

APORT101: IP to one RS232 and one ground isolated RS422/485 serial port converter.

APORT400: IP to four RS232 serial port converter.

APORT040: IP to four ground isolated RS232 serial port converter.

APORT004: IP to four ground isolated RS422/RS485 serial port converter.

APORT080: IP to eight ground isolated RS232 serial port converter.

APORT202: IP to two RS232 and two ground isolated RS422/485 serial port converter.

APORT022: IP to two ground isolated RS232 and two ground isolated RS422/485 serial port converter.

APORT602: IP to six RS232 and two ground isolated RS422/485 serial port converter.

APORT620: IP to six RS232 and two ground isolated RS232 serial port converter.

***All names are the trademarks of their respective organization.



RAYON TECHNOLOGY CO., LTD.

2F, No. 177, Chung_Shan 2 Rd., Lu_Chou city, Taipei Hsien, Taiwan.

TEL: 886-2-82858362 FAX: 886-2-82857065

E-Mail: rayon@ms1.hinet.net ; info@rayontech.com.tw

WEB: <http://www.computex.com.tw/rayon>

WEB: <http://www.rayontech.com.tw>