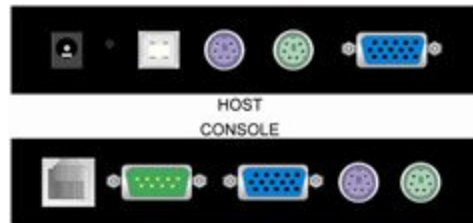


IPKVM101

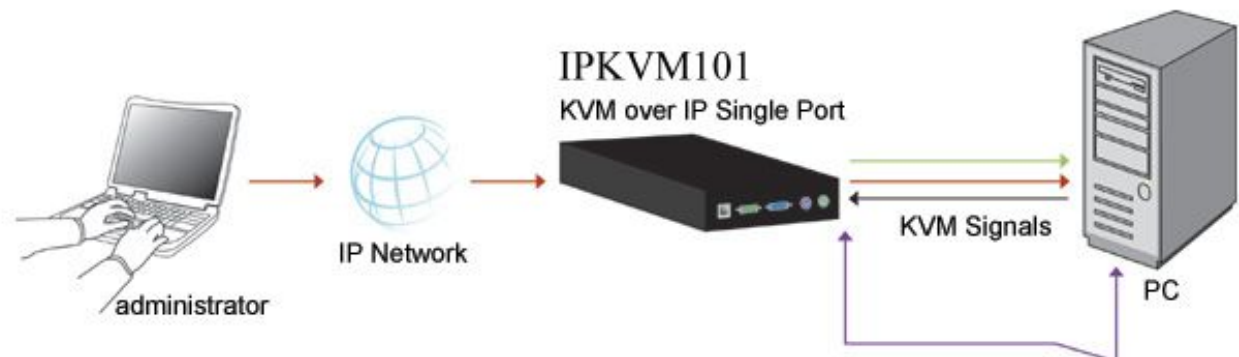
Single port KVM over IP

Add remote access to local KVM

Local and remote console management

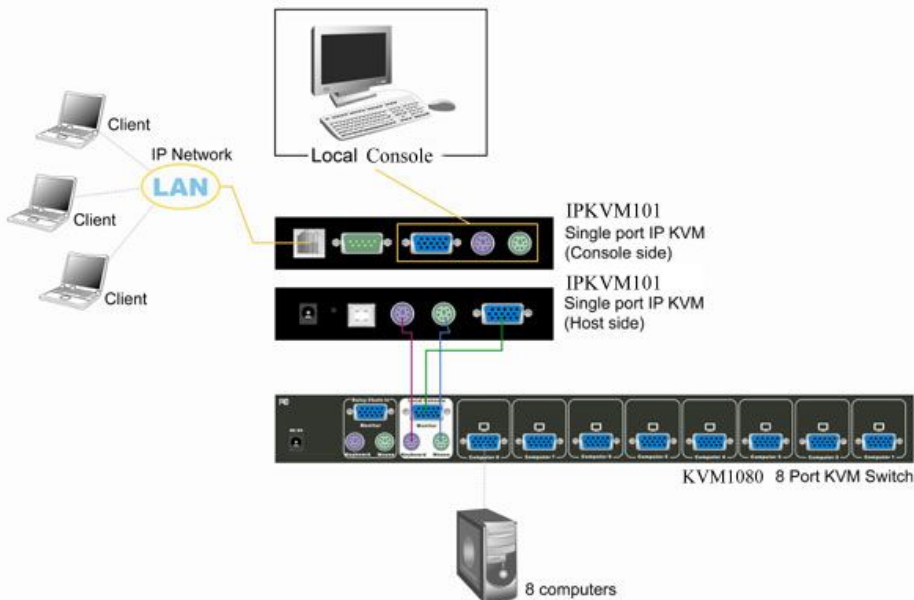


- ◆ **Support remote KVM access via IP network.**
- ◆ **Support PS/2 or USB connection for local server.**
- ◆ **Support PS/2 connector for local console.**



IPKVM101 Specification:

PC Port	1
PC Port Connector (All Female Types)	PS/2 Keyboard Mini Din 6 pin PS/2 Mouse Mini Din 6 pin VGA HDBB 15 pin USB Type B receptacle
Console Port	1
Console Port Connector (All Female Types)	Local Console: PS/2 Keyboard Mini Din 6 pin PS/2 Mouse Mini Din 6 pin VGA HDBB 15pin Remote Console: RJ-45 8P8C
Serial Port (DB9 pin Male)	1
LAN port (RJ-45 8P8C)	1 10BASE-T Ethernet uses Category 3/4/5/5E/6 UTP 100BASE-T Ethernet uses Category 5/5E/6 UTP
Reset button	1
Keyboard Emulation	PS/2
Mouse Emulation	PS/2
VGA Resolution	Local :1600 X1200 Remote : 1280 X1024
Power Adapter	DC 5V, 2.5A
Operation Temperature	0~50°C
Storage Temperature	-20~60°C
Humidity	0~80%, Non-Condensing
Weight (kg)	1700 g
Dimension (mm)	1536(W)X139(L)X27(H)
System requirement	
Local console side	One PS/2 Keyboard, one PS/2 Mouse and one monitor
Remote Console side	One PC or Multiple PCs are linked into the network
Computer side	One PC or Server or the console port of KVM switch unit



Other Relative Products:

- ▲ IPKVM108: 8 port KVM over IP.
- ▲ IPKVM116: 16 port KVM over IP.



RAYON TECHNOLOGY CO., LTD.

2F, No. 177, Chung Shan 2 Rd., Lu Chou city, Taipei Hsien, Taiwan.

TEL: 886-2-82858362 FAX: 886-2-82857065

E-Mail: rayon@ms1.hinet.net

WEB: <http://www.computex.com.tw/rayon>

WEB: <http://www.rayontech.com>