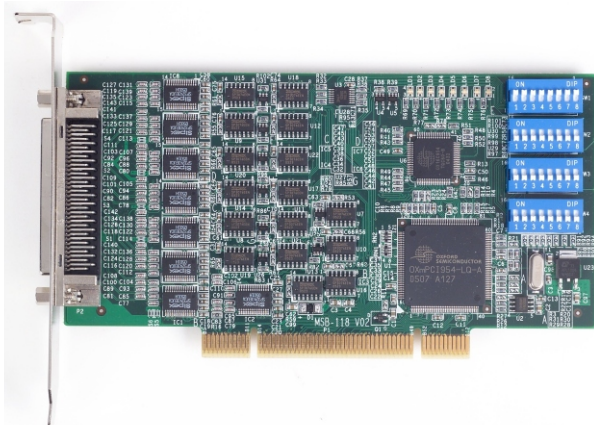


MSB-118

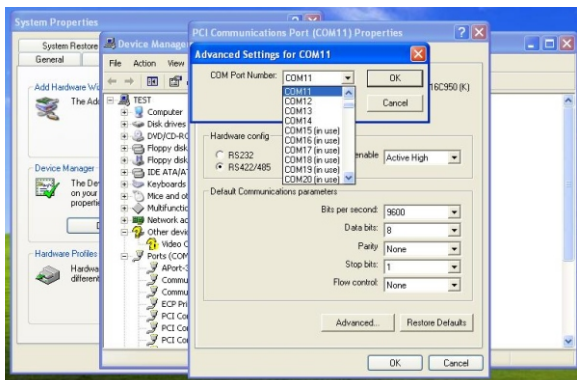
8-Port RS-232/422/485 UPCI Board



Introduction

The MSB-118 is a high performance 8-port RS-232/422/485 universal serial board. Each port of the MSB-118 can be independently configured as RS-232, RS-422 or RS-485 serial Interface by adjusting the on-board DIP switch. A high-performance 16C950 compatible UART chip with 128-byte FIFO is used for MSB-118 to improve the transmission throughput and reduce the host computer's CPU loading.

The MSB-118 is an universal PCI board which means the board can be plugged into PCs with 5V 32-bit PCI slots or PCs with 3.3V 32-bit PCI slots.



Easy-to-use Port Mapping Utility

Ordering Information

- MSB-118
8-Port RS-232/422/485 UPCI Board
with one 1-to-8 connection cable, 100cm

Accessories

- CBL-M68M9x8-100
1-to-8 connection cable, 100cm
(SCSI-3 male for the host side
DB9 for the device side)



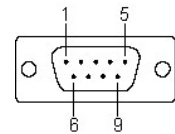
Features

- Each port can be independently configured as RS-232, RS-422 or RS-485 serial Interface
- High performance 16C950 compatible UART with 128-byte FIFO, over 700Kbps data throughput for each port running concurrently
- Hardware auto-direction control for RS-485
- Baud rate from 50bps to 921.6Kbps
- On-board bi-color LEDs as status indicators
- Universal PCI compatible, can be plugged into either 3.3V or 5V 32-bit PCI slots
- Windows 2003/XP/2000/NT/98/95/ME and Linux

Specifications

- **Hardware**
Bus: support both 5V and 3.3V 32-bit PCI
I/O address: assigned by BIOS
IRQ : assigned by BIOS, one IRQ for all serial ports
No. of Boards: 4 max. (share the same IRQ)
Host connector : 68pin SCSI-3 connector, female
- **Serial Port Signals**
UART: Oxford 16mPCI954 & 16C954
Connector: DB9, male
Protection: 15KV ESD for all signals

PIN	RS-232	RS-422	RS-485
1	DCD	TxD-	---
2	RxD	TxD+	---
3	TxD	RxD+	Data+
4	DTR	RxD-	Data-
5	GND	GND	GND
6	DSR	RTS-	---
7	RTS	RTS+	---
8	CTS	CTS+	---
9	RI	CTS-	---



- **Serial Port Parameters**
Baud Rate: 50bps to 921.6 Kbps
Parity: None, Even, Odd, Mark, Space
Data Bits: 5, 6, 7, 8 bits
Stop Bit: 1, 1.5, 2 bits
Flow Control: RTS/CTS, XON/XOFF, None
- **Drivers**
Windows: 2003/XP/2000/NT/98/95/ME
Linux: 2.4.12 and above
- **Power consumption:** 300mA@5VDC
- **Dimension:** 75 x 158 mm (29.5 x 62.2 inches)
- **Operation Temperature/Humidity**
0 to 55°C(32 to 131°F), 5 to 95% RH
- **Regulation**
CE Class A, FCC Class A