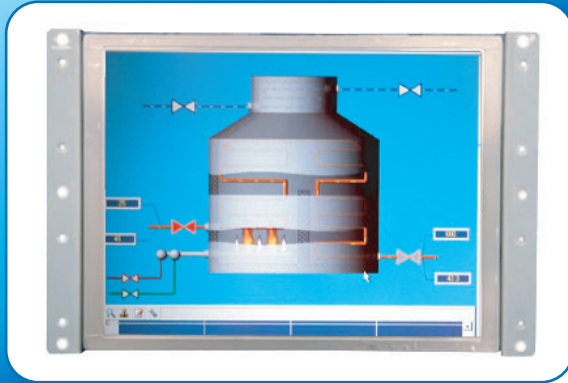


# Industrial Display Monitor

Open Frame Type

8" Open Frame Color TFT Display Kit

OPD-1080



## Display Specifications

Display	8" Color Active TFT Flat Panel Display
Luminance	400 cd/m <sup>2</sup>
Viewing Angle	130 (H/V)
Resolutions	800 x 600 ( native mode), 262K colors
Backlight Lifetime	40,000 hrs
Touch Screen	Analog resistive (optional)
OSD Control	On the back side
I/O Connectors	1xDC power input, 1xVGA, optional:DVI,S-Video,RCA, touch (RS-232 or USB)

## Mechanical Specifications

Construction	Steel chassis & front panel
Dimensions	219.5(W) x 144.5(H) x 44.5(D)mm
Power input	DC 12V only

## Environment Specifications

Operating Temperature	0~50°C(32~122°F)
Storage Temperature	-20~60°C (-4~140°F)
Relative Humidity	10~90% @40 C Non-condensing, without touch screen
Vibration	1G peak, 5~500 Hz (Random)
Shock	15G peak acceleration (11 msec. duration)
Certificate	Meet CE / FCC Class A

## Dimensions

