



H/W Specifications

CPU / Memory

- CPU: NXP LPC1768 Cortex-M3 100MHz
- Memory: 512KB on-chip Flash, 64KB SRAM

Network Interface

- Type: 1 x 10/100Mbps, RJ45 connector
- Protection: 1.5KV Magnetic isolation

Isolation Analog Input

- No. of Channels: 8
- Input Type: Differential input
- Input Mode: Voltage / Current
- Resolution: 16-bit
- Input Range:
 - Unipolar: 0~150mV, 0~500mV, 0~1V, 0~5V, 0~10V
 - Bipolar: +/-150mV, +/-500mV, +/-1V, +/- 5V, +/-10V
 - Current: 0~20mA
- Input Impedance: 20M Ohm (voltage), 120 Ohm (current)
- Accuracy: +/-0.1% FSR
- Isolation: 2500VDC

Relay Output

- No. of Channels: 1
- Contact Rating: 30VDC@1A or 125VAC@0.5A

General

- Power: 9~48VDC terminal block
- Protection: Auto polarity and surge protect
- Dimensions (W x H x D): 78 x 108 x 25mm

Front View



Features

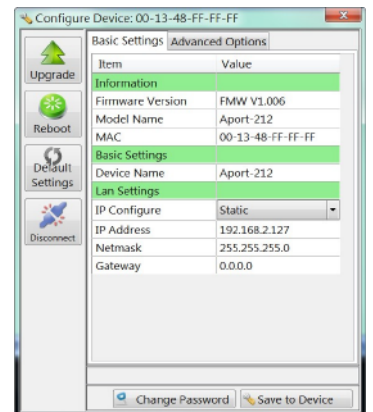
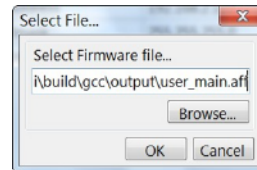
- C Programmable analog input remote I/O module
- 1 x 10/100Mbps Ethernet port
- 8 x 16-bit A/D, isolation up to 2500Vrms
- 1 x relay output
- Form A or Form B relay with contact rating 30VDC@1A or 125VAC@0.5A
- Support lwIP and BSD socket library
- Support tiny web server
- Windows configuration utility included
- Toolchain: Sourcery CodeBench Lite or Keil from ARM

S/W specification

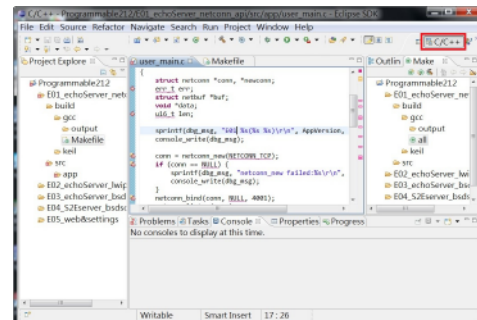
- Protocol Stacks: IPv4, ICMP, ARP, DHCP, NTP, TCP, UDP, HTTP
- Device Drivers: SD / MMC, UART, Real Time Clock, Buzzer, Digital I/O, Ethernet, Watchdog Timer

Windows Utility Functionalities

- Broadcast search
- Configuration
- User web page conversion



Example Program



Ordering Information

- RIO-2017PG
C Programmable Analog Input Remote I/O Module
- DK-35A (36-DK35A-000)
DIN RAIL Mounting Kit
- PWR-12V-1A (31-62100-000)
110~240VAC to 12VDC 1A Power Adapter