

Xtreme/104 Opto

Applications

The Xtreme/104 Opto adapter offers two or four asynchronous RS-232 and/or RS-422/485 serial ports with optical isolation for data collection devices, barcode readers, time clocks, scales and other industrial automation equipment. The Xtreme/104 Opto adapter is an ideal industrial strength solution for control and automation applications requiring single node or multi-drop communications over short or long distances, and electrical isolation using PC/104 bus compatible computers.

Features

- Two or four asynchronous RS-232, and/or RS-422/485 serial ports - each port's electrical interface is jumper selectable.
- Each port individually isolated up to 3.0 kV AC peak to peak, 3.0 kV DC and 2.1 kV AC RMS on all signals.
- Supports data communications speeds up to 460.8 Kbps. (custom baud rates also available)
- 16C2850 UARTs control each port providing 128 bytes of Tx/D/RxD FIFO buffers.
- Supports three RS-422/485 modes:
 - Full Duplex
 - Half Duplex with auto Tx/D echo cancellation
 - Multi-drop Slave
- Each RS-422/485 transmitter and receiver has a jumper selectable 120 Ohm termination resistor.
- Eight pre-defined sets of I/O addresses are jumper selectable.
- IRQ lines are jumper selectable. A choice of IRQ lines 3, 4, 5, 6, 7, 9/2, 10, 11, 12, 14, 15 is available and each Xtreme/104 Opto board can be set to run on one, two, or four interrupts.
- Independent port configuration with baud rates from 50 bps to 460.8 Kbps; data bits of 5, 6, 7 or 8; stop bits of 1, 1.5, or 2, and odd, even, or stick parity.
- Optional DB-9 male cables available (custom connectors also available).
- Easy installation comes with comprehensive manual and driver software.

Benefits

High Speed, High Performance Communications

Achieve rapid data transfer rates up to 460.8 Kbps. State of the art 16C2850 quad UARTs with 128 bytes of Tx/D and Rx/D FIFO buffers offload interrupt handling and buffering from the main CPU, thus improving overall system performance.

Hardware Reliability

Each port individually isolated up to 3.0 kV AC peak to peak, 3.0 kV DC and 2.1 kV AC RMS on all signals. This makes the Xtreme/104 Opto an excellent choice for mission critical applications that require highly reliable and rugged serial communications.

Hardware Flexibility

The Xtreme/104 Opto offers hardware flexibility and adaptability for your application. You can configure each port's electrical interface, baud rate, parity, data and stop bits independently and various connector options are offered to suit your needs. The Xtreme/104 Opto supports three RS-422/485 modes: Full Duplex; Half Duplex with auto Tx/D echo cancellation, and Multi-drop Slave.

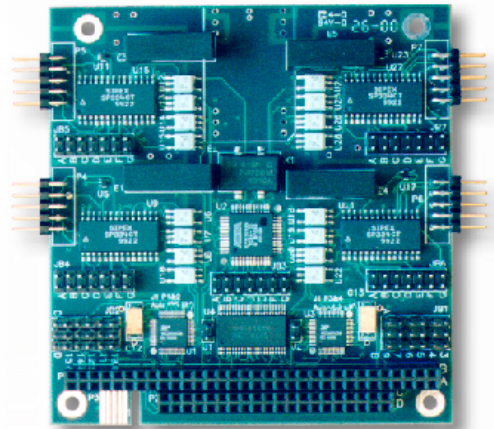
Software Compatibility

Because of its compatibility with standard PC serial ports, the Xtreme/104 Opto board supports all the most popular operating systems and communication software.

Easy to Use

The Xtreme/104 Opto comes ready for simple installation. Included are board, device driver software and a comprehensive manual.

Trademarks
© 2001 - 2003 Connect Tech Inc.
All other brands & product names are trademarks or registered trademarks of their respective holders.



Warranty and Service

Connect Tech, an ISO 9001 registered company, has provided high performance communication solutions since 1985, building and testing products to meet high standards of quality and reliability. Xtreme/104 Opto adapters are covered by our excellent no cost customer support and a lifetime warranty.

Specifications

	Xtreme/104 Opto
Number of ports	Two and four
Electrical Interface	RS-232 and/or RS-422/485 - each port's electrical interface is jumper selectable
Optical Isolation	Each port individually isolated up to 3.0 kV AC peak to peak, 3.0 kV DC and 2.1 kV AC RMS on all signals
Connectors	10 pin header connectors <i>(Custom connectors and optional DB-9 male cables also available)</i>
Control Signals	RS-232: RTS, CTS, Tx/D, RxD RS-422/485: Tx/D ±, RxD ±, CTS ±, RTS ±
Baud Rates	RS-232: 50 bps - 230.4 Kbps RS-422/485: 50 bps - 460.8 Kbps <i>(Custom baud rates also available)</i>
I/O Addresses	Eight pre-defined sets of I/O addresses are jumper selectable - requires one set of eight addresses
Interrupts	Jumper selectable for IRQs 3, 4, 5, 6, 7, 9/2, 10, 11, 12, 14, 15
UART Type	16C2850 quad UARTs with 128 byte Tx/D/RxD FIFO buffers
Dimensions	Width: 9.60 cm/3.77 in. Length: 10.41 cm/4.09 in. (includes 10 pin headers) Height: 1.12 cm/0.44 in.
Power Requirements	+5 VDC @ 200mA (max) ±5%
Environmental Requirements	Temperature: Operating: 0° to 70° C (standard temperature model) -40° to 85° C (extended temperature model) Storage: -40° to 150° C Humidity: 95% non-condensing
Bus	ISA bus compatible 16 bit PC/104 connector.
Software Compatibility	DOS, Linux, QNX, SCO Unix, Solaris, and Windows 95/98/Me/CE/CE .NET/NT/2000/XP <i>(Contact Connect Tech for most current list)</i>
System Requirements	One available PC/104 module stack connector and hardware interrupt (if required)

Please call for more information about our industrial strength communication products



Connect Tech Inc.

42 Arrow Road
Guelph, Ontario
Canada N1K 1S6
Tel: 519-836-1291
800-426-8979
Fax: 519-836-4878

Email: sales@connecttech.com
URL: www.connecttech.com

