

TRP-C37M

User's Manual

MODBUS TCP to RTU/ASCII Gateway



User's Manual

Printed Apr.2014 Rev 1.3

Trycom Technology Co.,Ltd

No.35, Zhongxing Rd., Guishan Township, Taoyuan County 333, Taiwan.

Tel : 886-3-350-3351 Fax: 886-3-350-3352

Web: www.trycom.com.tw

Copyright

Copyright Notice: The information in this manual is subject to change without notice to improve reliability, design and function and does not represent a commitment on the part manufacturer. No part of this manual may be reproduced, copied, or transmitted in any form, without prior written permission by the manufacturer. Products mentioned in this manual are mentioned for identification purposes only. In this manual, product names appearing may or may not be registered trademarks of their respective companies or copyright.

1. Introduction

TRP-C37M is an industrial environmental Modbus TCP to RTU/ASCII Gateway with wide range power inputs and serial communication protection, built-in surge and over current protection ensuring long distance serial quality. The RS485 interface built-in hardware decoder ensures RS485 data without loss. The hardware keeps on line RS485 device working fine; Built-In watchdog function will auto reset when system fail or power fails. External switch ensures loss of password or IP that can be easily reset back to factory settings.

The TRP-C37M operates in “Direct IP Mode”, “Virtual COM Mode”, and “Paired Mode”, The Ethernet port supports Auto-MDIX and Auto-select 10/100MB. TRP-C37M also offers a Heart Beat feature to ensure a reliable communicating connection.

The TRP-C37M also offers the maximum connection 16 host client to link the one Serial Gateway that is easy to operate in Modscan32 and Modbus Poll application uses TCP mode, Virtual-COM mode and Pair Mode.

The TRP-C37M built-in power detection circuit can prevent the power fail cause of the system boot fail.

1-1 Features

- Wide input range DC power supply.
- Built-In watchdog function prevents system boot fail.
- Support Auto-MDIX twisted pair crossover detection and Auto-Correction.
- Modbus Type support TCP Master to Serial Slave and TCP Slave to Serial Master.
- Support 1 serial master to 8 TCP slave ,each TCP slave can free set up UID from 1~64.
- Compatible with Modscan32 ,Modbus Poll,CAS Modbus Scanner and SCADA .. Application.
- Support virtual com maximum connection 16 client.
- Auto fast direction RS485 flow control by hardware.
- Surge protection and over current and over voltage on RS-422/485 data lines.
- Support baud rate from 1200~921600Kbps.
- Auto switching RS-232/422/485 signal interface.
- Fully compatible with Ethernet and TCP/IP protocol.
- Supports 10/100 Mbps Ethernet.
- Power/Link/UART RX/UART TX mode LED indicator.
- Heart Beat function ensures a reliable communicating connection.
- Auto reconnection when power or Ethernet fail.
- Back to factory configuration by external switch.
- Support configuration by serial console.
- Update the firmware from LAN.
- Dual power input select from screw terminal or DC-Jack.

1-2 Specification

- Power Input Voltage: DC +10V to +30V.
- LAN: Auto-MDIX, 10/100 Mbps Auto-detecting.
- RS-232: TX, RX, RTS, CTS, DTR, DSR, DCD, GND.
- RS485 signal: differential 2 half-duplex wires (DATA+, DATA-).
- RS422 signal: differential 4 full-duplex wires.(TX+,RX+,TX-,RX-)
- Baud Rate: 1200,2400,4800,9600,19200,38400,57600,115200,921600 K bps.
- Parity: none, even, odd.
- Data Bits: 5, 6, 7 or 8.
- Stop Bits: 1, 1.5 or 2.
- Modbus TCP Type: TCP Master to Serial Slave, TCP Slave to Serial Master.
- TCP Slave to Serial Master Mode: Maximum 8 TCP Port. UID Range:1~64.
- Virtual COM drivers for Windows 98/WIN2000/WIN XP/Vista/WIN2003/WIN7/WIN8.
- External switch: OFF OFF : Directly IP mode, RTU protocol. .

 ON OFF: Virtual-Com and Paired mode .

 OFF ON: Directly IP mode, ASCII protocol

 ON ON: Back to Factory.

- Virtual-Com mode support RS232 TXD,RXD,GND.

 RS422 TX+,TX-,RX+,RX-.

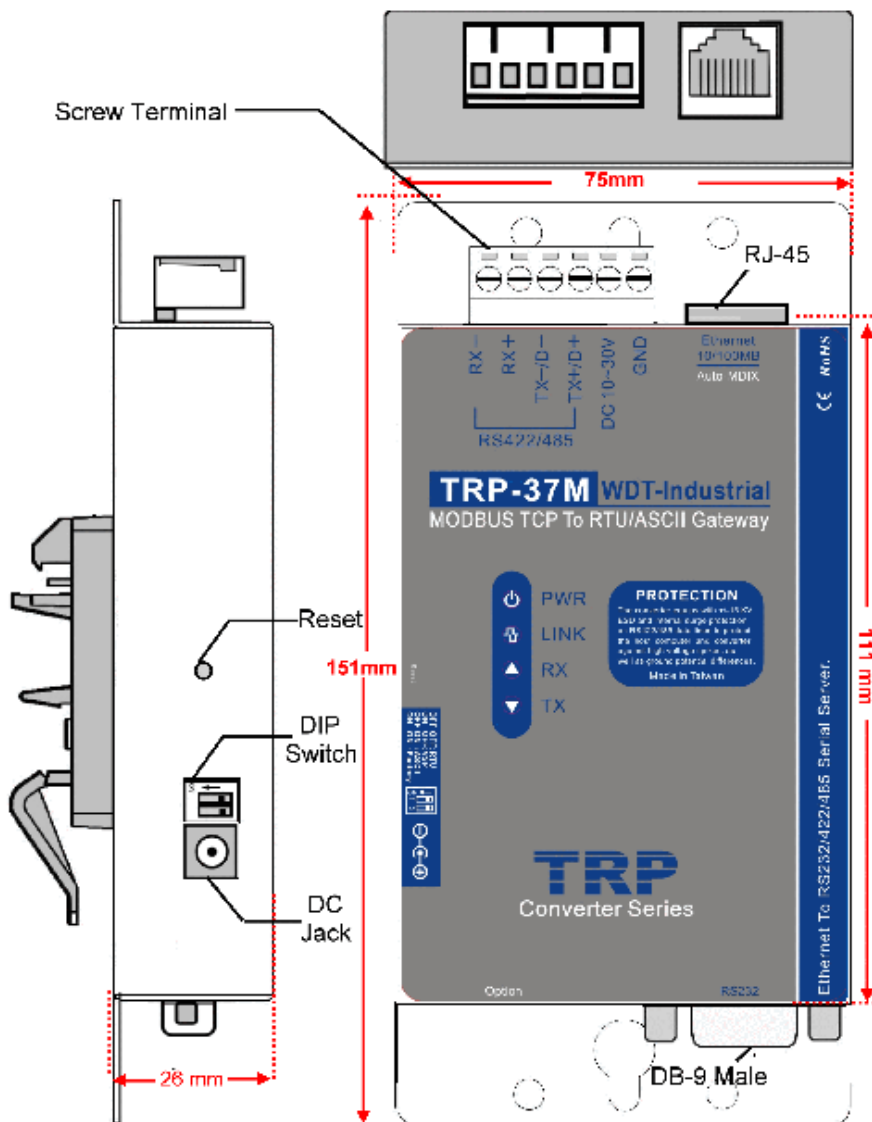
 RS485 D+,D-.

- Power supply: Screw terminal, or DC jack.
- Serial interface: +/-15 KV ESD.
- RS422/485 interface: Surge, over current, over voltage protection.
- RS422/485 interface: Industrial plug-in screw terminal.
- Plug-in screw terminal wiring: Accepts AWG #12 ~30 wires.
- Power consumption: 12V/140mA.
- Operating Temperature: -10 to 65 °C.
- Humidity: 0~90% Non-Condensing.
- Dimensions: 151(L)*75(W)*26(H) mm.
- Weight: 395g with packing.

2. Hardware Description

The following information is provided to give the user an understanding of how to connect the TRP-C37M to the LAN and serial device. A review of the switch settings and the functionality of the LED's are also provided.

2-1. Panel layout



Notice: User can only select either external DC-Jack or Screw terminal DC input. Do not use external DC-Jack and screw terminal DC input simultaneously.

2-2. LED indicator

PWR LED: System is ready.(Blinking)

LINK LED: Ethernet cable connection and data active.

TX/RX LED: UART Transmitting/Receiving Indicator.

DC Jack: Power Input DC +10V to +30V. (Please use the 5.5*2.1mm Dc Jack plug).

2-3. Reset Button

Push the reset button will Re-Boot.

2-4. DIP Switches

External switch 1,2: OFF OFF : Directly IP mode, RTU protocol. .
 ON OFF: Virtual-Com and Paired mode .
 OFF ON: Directly IP mode, ASCII protocol
 ON ON: Back to Factory.

2-5.Factory Setting

Factory Setting: ***Adjust the external switch to ON ON will back to factory.**

The screenshot shows a 'Device Setup' window with two tabs: 'Network Setting' and 'Serial Port Setting'. The 'Network Setting' tab is active, displaying various configuration fields:

- Device Name: TRP-C37M
- Module Name: TRP-C37M
- MAC Address: 00-0E-C6-00-02-04
- Netmask: 255.255.255.0
- DHCP: Enable
- Gateway: 192.168.1.3
- Server/Master (selected):
 - Listening IP: 192.168.1.1
 - DNS Server: 168.95.1.1
 - Data listening port: 502
 - Transmit Timer (ms): 10
- Client/Slave:

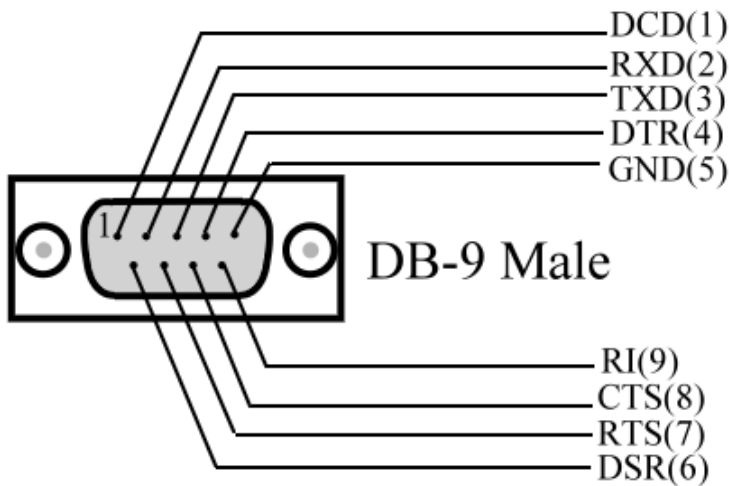
UID Range	Client/Slave IP Address	Port
1 To 8	0.0.0.0	502
9 To 16	0.0.0.0	502
17 To 24	0.0.0.0	502
25 To 32	0.0.0.0	502
33 To 40	0.0.0.0	502
41 To 48	0.0.0.0	502
49 To 56	0.0.0.0	502
57 To 64	0.0.0.0	502
- Heart Beat: Disable
- Maximun Connection: 1
- TCP Keep Alive Timer: 7
- New Password: (empty)
- Firmware Version: 352
- Data Packet Type:
 - UDP
 - Auto connect after reboot
 - TCP
- Management Packet Type:
 - Broadcast
 - Multicast

At the bottom of the window are three buttons: 'Submit', 'Save', and 'Load'.

The screenshot shows the 'Serial Port Setting' window with the following configuration:

- Baud rate: 9600
- Data bits: 8
- Parity: None
- Stop bits: 1
- Flow Control: None

2-6. DB-9 Pin male pin assignment



3. Install TRP-C37M Hardware

STEP1: Connect power source with TRP-C37M ,the PWR LED will blinking.

STEP2: Connect TRP-C37M with internet port by RJ45 LAN cable.

If the cable is properly connected the “LINK” LED will light up.

**The TRP-C37M Support Auto-MDIX, A straight-through or crossover Ethernet cable can be used to make a connection directly to the HUB/Router/PC.*

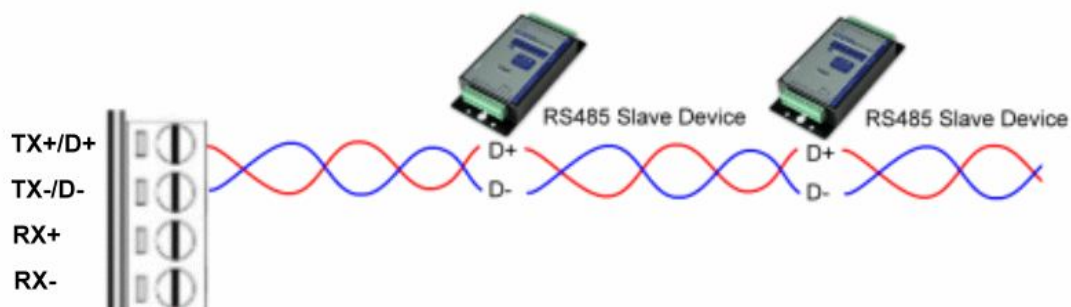
STEP3: Connect TRP-C37M with RS232 or RS422/485 RTU/ASCII of serial device.

The TRP-C37M has one DB-9 male connectors for RS232 connection and a screw terminal connector for RS422/485 connection.

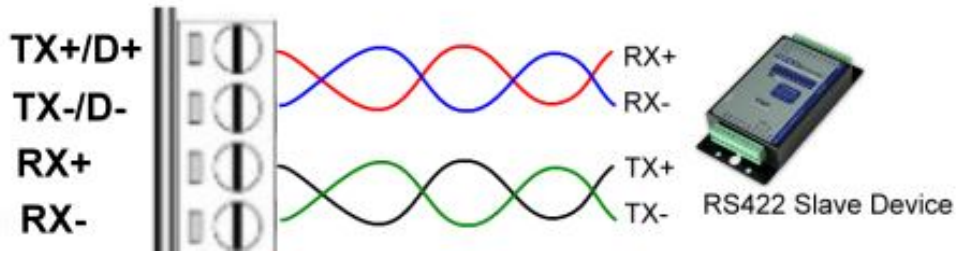
The DB-9 serial port is DTE interface. A null modem cable is required to make a connection between the COM port on a PC and the TRP-C37M serial port. A straight through cable is required to connect the TRP-C37M serial port to a DCE device.

The screw terminal connector accepts AWG #12 ~30 wires.

3-1. RS485 Wiring

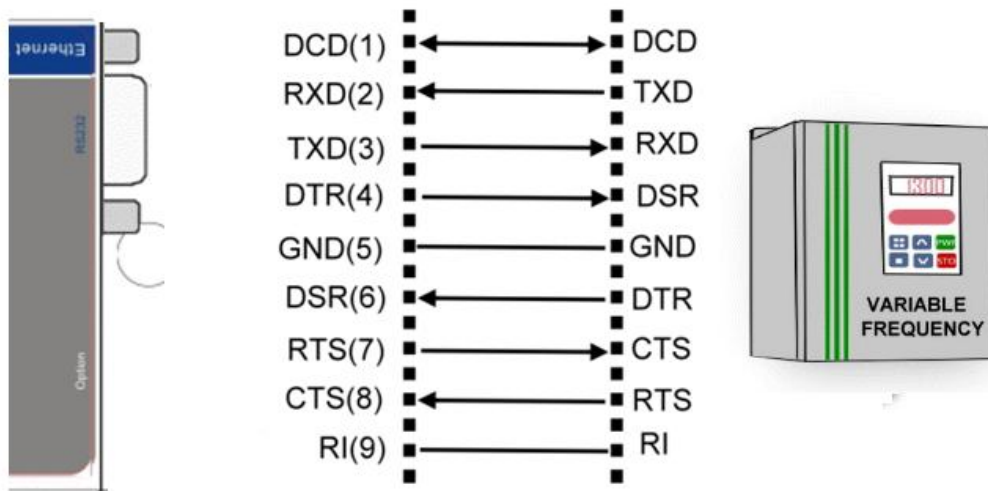


3-2. RS422 Wiring



3-3. RS232 Wiring

The RS-232 supports 8 channels plus Signal Ground and is configured as DTE like a computer. Signals are single ended and referenced to Ground. To use handshaking, Flow Control must be set to RTS/CTS during Configuration. Refer to the Pin out table for connections.




4. How to configure TRP-C37M

There are 3 ways to access the Server Properties and program the TRP-C37M.

a. TRP-C37X DSM utility.

TRYCOM TRP-C37X DSM 3.51



TRP C37X DSM

Device Setup

Network Setting | Serial Port Setting

Device Name: TRP-C37M

MAC Address: 00-0E-C6-00-02-04

DHCP: Enable

Server/Master
Listening IP: 192.168.1.1
Data listening port: 502

Client/Slave

UID Range	Client/Slave IP Address	Port
1 To 8	0.0.0.0	502
9 To 16	0.0.0.0	502
17 To 24	0.0.0.0	502
25 To 32	0.0.0.0	502
33 To 40	0.0.0.0	502
41 To 48	0.0.0.0	502
49 To 56	0.0.0.0	502
57 To 64	0.0.0.0	502

Module Name: TRP-C37M

Netmask: 255.255.255.0

Gateway: 192.168.1.3

DNS Server: 168.95.1.1

Transmit Timer (ms): 10

Heart Beat: Disable

Maximun Connection: 1

TCP Keep Alive Timer: 7

New Password:

Firmware Version: 352

Data Packet Type

UDP

Auto connect after reboot

TCP

Management Packet Type

Broadcast

Multicast


Submit

Save

Load

b. WEB Server

<http://www.trycom.com.tw>



TRP-C37M

WDT-Inside

Ethernet to RS232/422/485 Serial Server

Serial Settings

Data Baud Rate: 9600

Data Bits: 8

Data Parity: None

Stop Bits: 1

Flow Control: None

Network Settings

Enable DHCP

Static IP Address: 192.168.1.1

Static Subnet Mask: 255.255.255.0

Static Default Gateway: 192.168.1.3

Static DNS Server: 168.95.1.1

Connection Type: TCP

Transmit Timer: 10

Server/Client

Server: Server

Server:

Server Listening Port: 502

Client:

Destination IP: 192.168.1.2

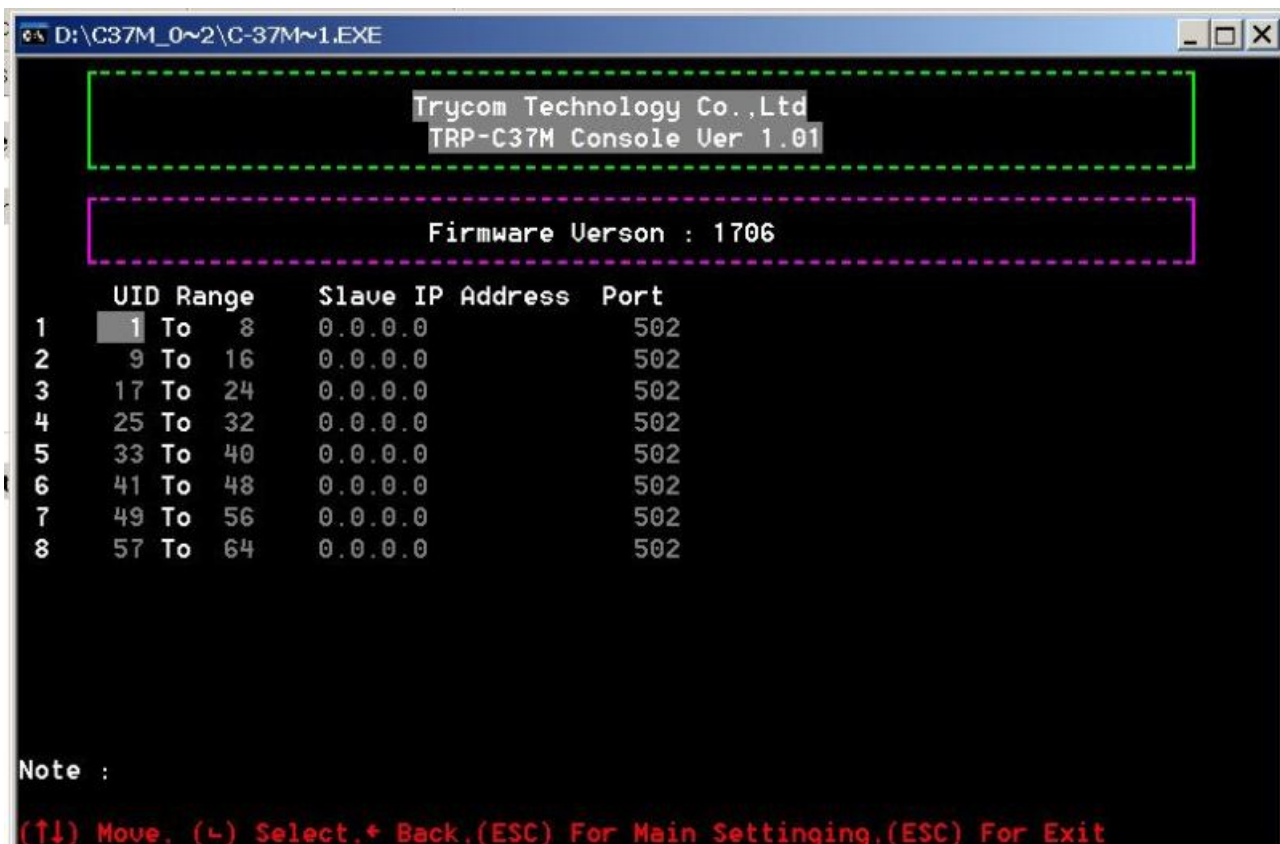
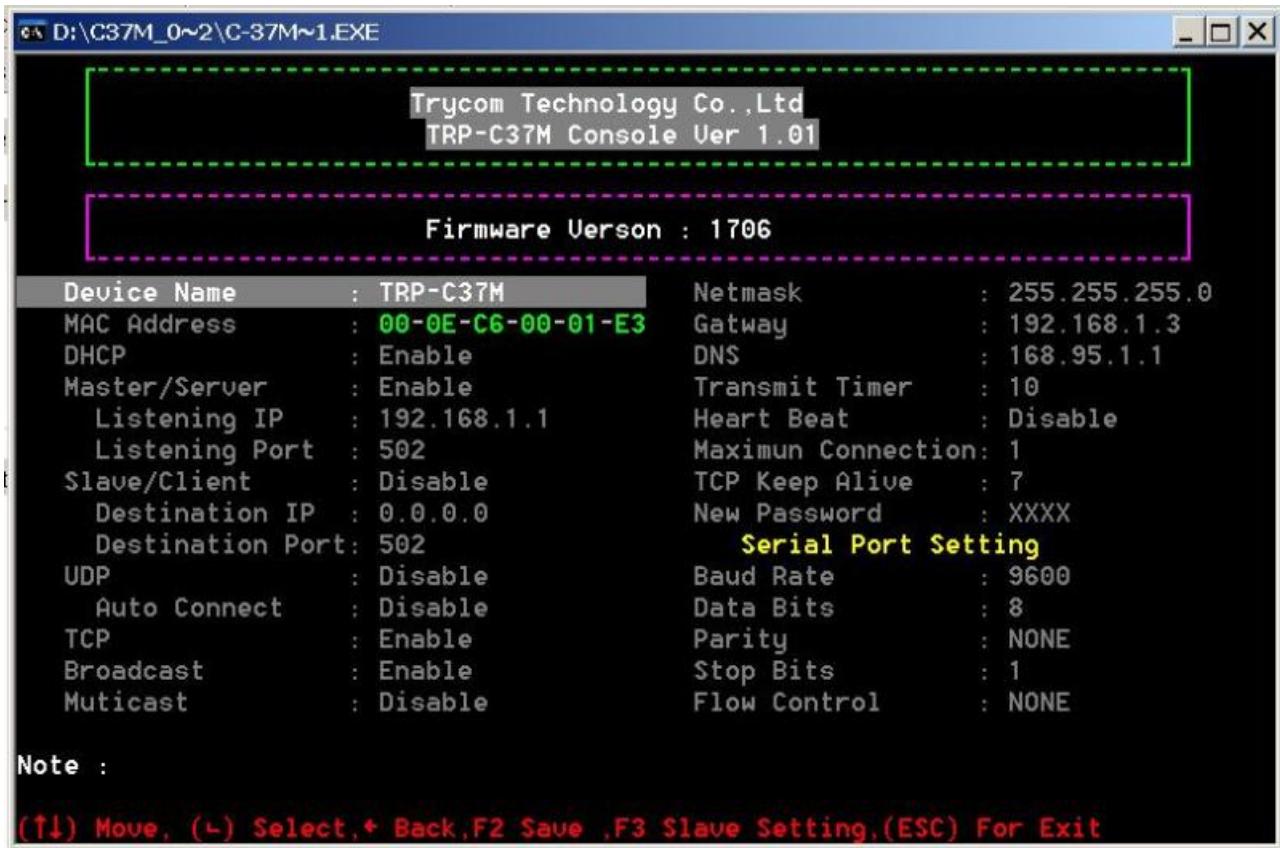
Destination Port: 502

New Password

Enable Reboot

Apply Reset

c. Serial Console



4-1. Using TRP-C37X DSM Utility.

The "TRP-C37X DSM" software performs several functions:

- A: Searching for TRP-C37M connected to the network.
- B: Displaying and changing the configuration of TRP-C37M.

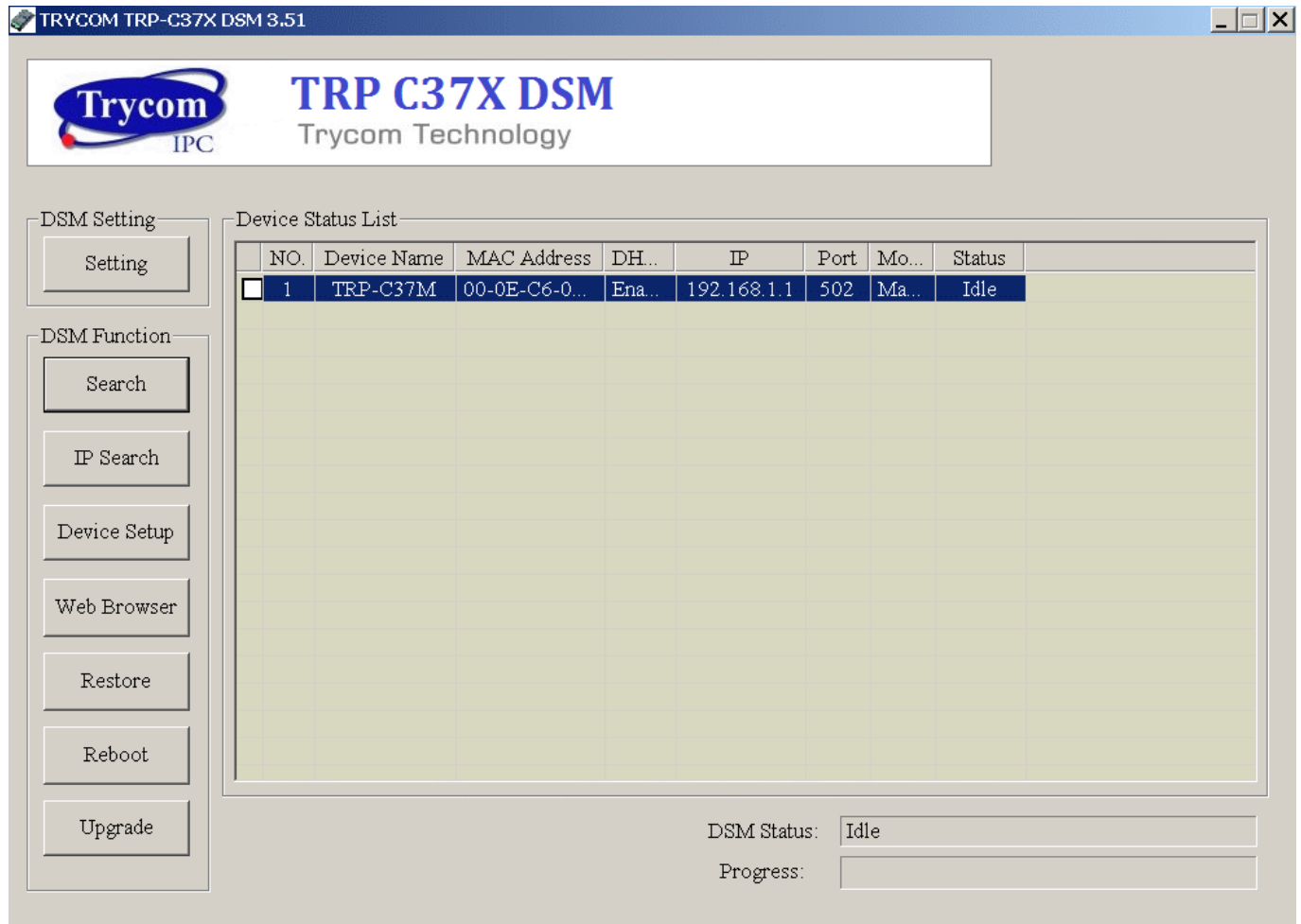
C: Upgrading the TRP-C37M firmware.

*Refer the Firmware upgrade help file.

D: Saving and Loading Configuration from external log File or EEPROM.

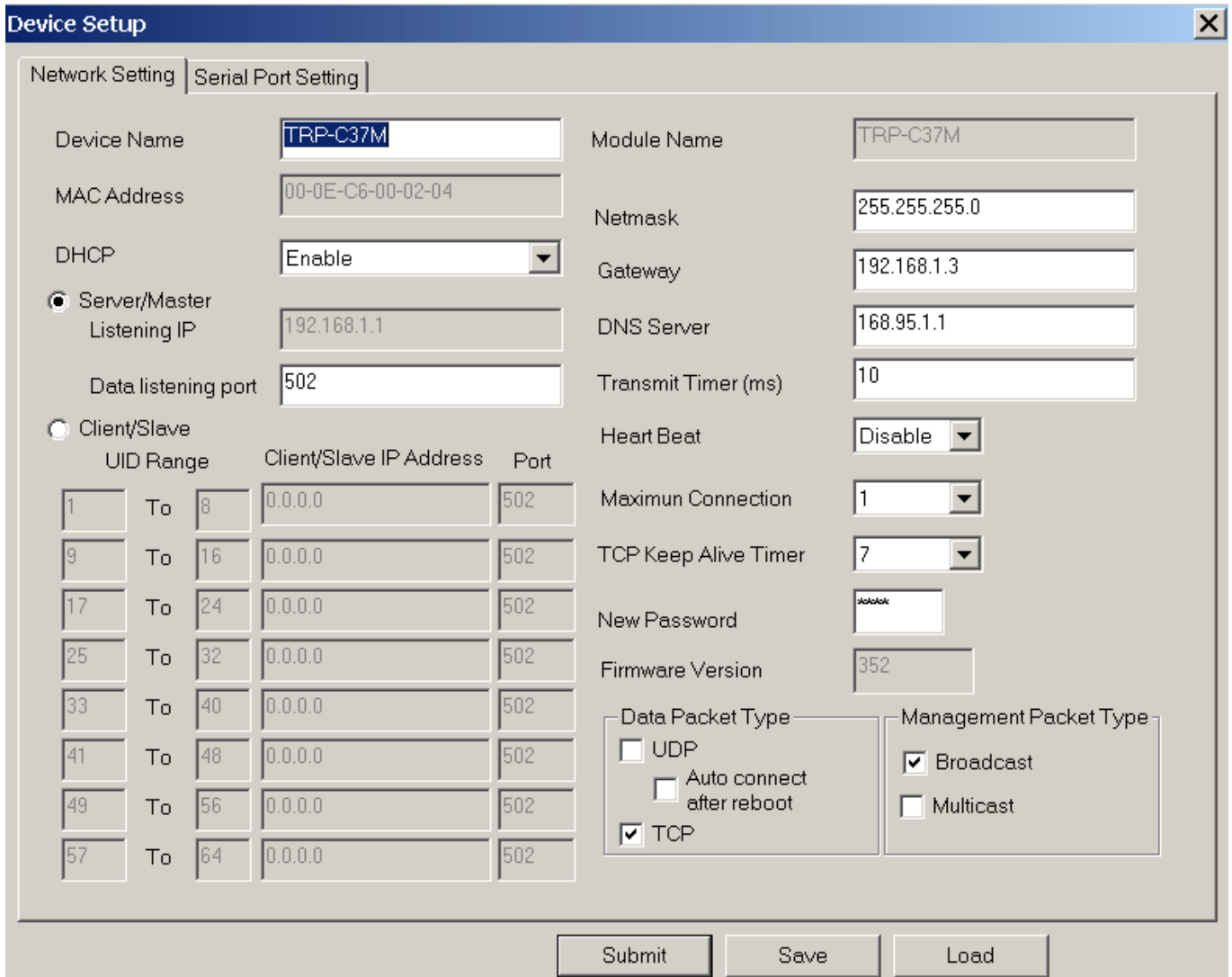
4-2. Searching LAN for TRP-C37M

Once TRP-C37M is connected to the LAN the **TRP-C37X DSM** software will search it and display it in a window by name , IP address, Mac....Information.



4-3. Configuring Server Properties

Select the "NO." item and Double click to open the Server configuration, after setting then click "Submit" will save the configuration to EEPROM.



Device Name

Device server name, Maximum 10 chars.

MAC Address

The Device server MAC address.

DHCP

If DHCP is disabled, it allows user setting the IP address, Subnet mask, Gateway.

If DHCP is enabled ,the IP address, Subnet mask, Gateway address will be dynamically configuration by DHCP server such router.

When “DHCP” is enabled ,but the DHCP server is not available on the network, the TRP-C37M will timeout then back to factory setting IP=192.168.1.1.

Master mode:

Listening IP: The Gateway IP address.

Listening port:RS232/422/485 port address.

Slave Mode:

UID Range(1~64) Using UID range to map a query from Modbus serial master with an UID within this range to an IP and port.

Slave IP Address and TCP port

The TRP-C37M maps a message from MODBUS serial master to a serial slave.

Netmask

The default LAN Netmask is configured for a Class C address. This maybe reconfigured by the user.

Gateway

Input the gateway IP address that can be allows users to access the serial gateway from internet.

DNS

Short for Domain Name System, an Internet service that translates domain names into IP addresses. Because domain names are alphabetic, they're easier to remember. The Internet however, is really based on IP addresses. Every time you use a domain name, therefore, a DNS service must translate the name into the corresponding IP address.

Transmit timer:0~500 mS/Unit

Time interval to send out serial data char starring packet.

**The function main support serial data input to TRP-C37M RS232/422/485 port, if serial data is a mass of serial data over 1K Byte ,Trying to adjust the Timer to 200ms.*

Hear Beat: Disable /Enable

When Hear Beat enable, it allows open a 5300 port, 5 sec interval to send out data char packet that provides a easy way to ensure the LAN communications between Host PC Client and gateway devices.

Maximum Connection: 1~16

The function allows the user to configure the TRP-C37M Serial Gateway to have up to 16 TCP client connections.

TCP Keep Alive: 1~7 /Minute

When TRP-C37M in Server mode, the TRP-C37M without data over the 1~7 Min setting value, The TRP-C37M will be disconnecting TCP.

When TRP-C37M in Client mode, the TRP-C37M without data over the 1~7 Min setting value, The TRP-C37M will be reconnecting TCP.

New Password: 1234

It only accepts value from1000~9999 integer, if input the wrong password over 5 times, the WEB-Page will lock until the TRP-C37M re-boot.

Firmware Version

Firmware Version.

Serial Port setting

Baud Rate: UART Speed from 1200,2400,4800,9600,19200,38400,57600,115200,921600 k bps

Data Bit: 5,6,7,8

Parity: Odd, Even, None

Stop Bits: 1, 1.5,2

Flow Control: Xon/Xoff, Hardware, None

Submit

Save the setting value to EEPROM.

Save

Save the setting value to external log file.

Load

Load the setting value to external log file.

Upgrade

Upgrade the firmware

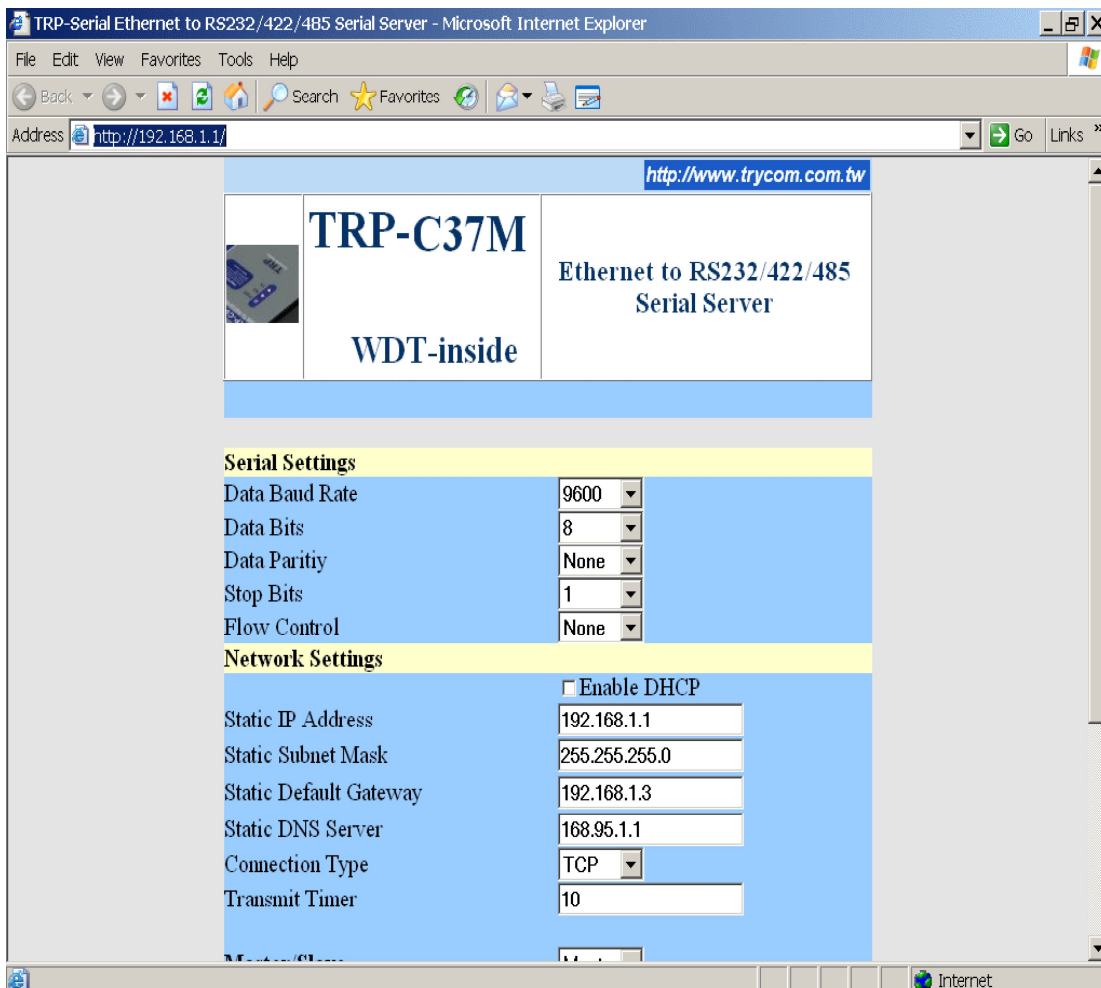
4-4 using the WEB Server mode

The Web Server can be used to configure the TRP-C37M Serial Gateway from any web browser software (such as I.E).

In Internet Explorer type the IP Address of the Serial Gateway into the address field and press the **Enter** key. The following window will appear:

Example:

If TRP-C37M IP is 192.168.1.1 Please Input the 192.168.1.1 then enters at web address, the web-page will appear..... See diagram below.



4-5 using the serial console mode

The serial console can be used to configure the TRP-C37M Serial Server from DB-9 connector link the HOST PC by null modem cable.

COM PORT



Host PC

Null-MODEM CABLE

PIN2----PIN3
PIN3----PIN2
PIN5----PIN5

RS232 Port



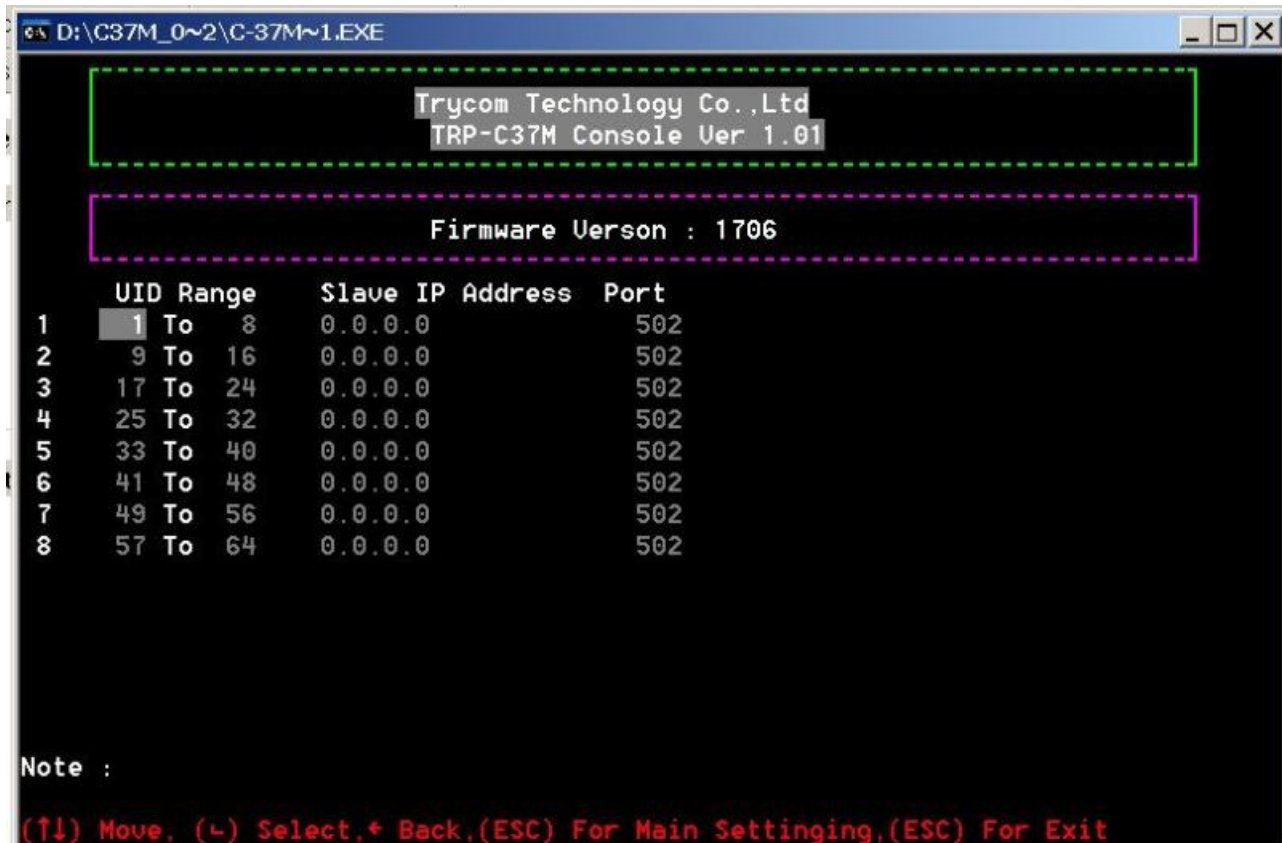
Insert the TRP-Serial CD then find the CONSOLE.exe, The CONSOLE file support all windows O.S include MS-DOS, Run the CONSOLE file and **Re-boot** the TRP-C37M then select correct host COM port number and data format.

```

D:\C37M_0~2\C-37M~1.EXE
-----
Trycom Technology Co.,Ltd
TRP-C37M Console Ver 1.01
-----
Firmware Uerson : 1706
-----
Device Name      : TRP-C37M          Netmask          : 255.255.255.0
MAC Address      : 00-0E-C6-00-01-E3  Gateway          : 192.168.1.3
DHCP             : Enable           DNS              : 168.95.1.1
Master/Server   : Enable           Transmit Timer   : 10
Listening IP    : 192.168.1.1       Heart Beat       : Disable
Listening Port  : 502              Maximun Connection: 1
Slave/Client    : Disable          TCP Keep Alive   : 7
Destination IP  : 0.0.0.0           New Password     : XXXX
Destination Port: 502
UDP             : Disable
Auto Connect    : Disable
TCP             : Enable
Broadcast       : Enable
Muticast        : Disable
Serial Port Setting
Baud Rate       : 9600
Data Bits       : 8
Parity          : NONE
Stop Bits       : 1
Flow Control    : NONE

Note :
(↑↓) Move, (-) Select, + Back, F2 Save, F3 Slave Setting, (ESC) For Exit

```

5. Install the Virtual-COM

The Virtual-COM utility support TCP/IP 、 UDP data mapping to the HOST PC virtual-com, it can creative Maximum 512~1024 virtual-com port, Support Server 、 Client 、 UDP mode, Support all Windows O.S include Win98/Win2000/WinXP/Vista/Win2003/WIN7,Support Multi-virtual com at different PC to one Serial Gateway; Support Ethernet and Internet , If TRP-C37M off line or power fail, The Virtual-Com utility will try to Reconnection.

Step 1. Adjust the switch position to “ON, OFF”.

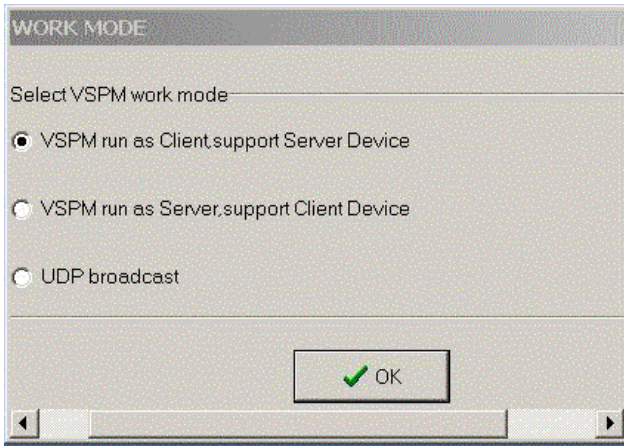
Step 2. Insert the TRP-Serial CD and find the TRP-C37M folder.

Step 3. Click “Vcomm.exe” icon then install Virtual-COM utility.

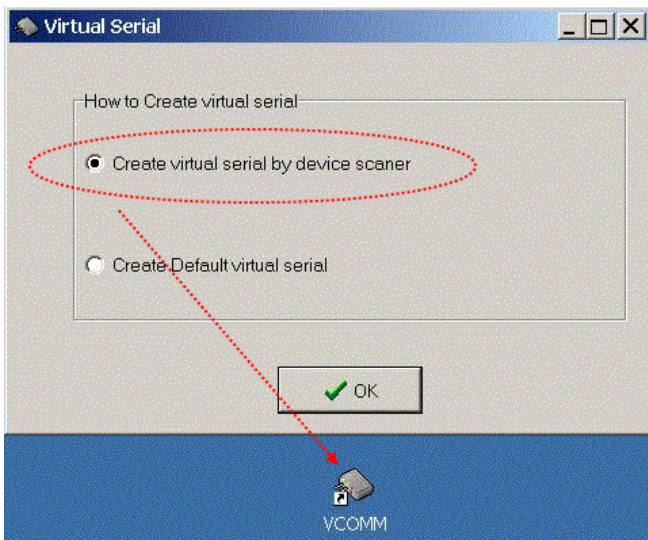
*The Virtual COM utility support multi-language, please select which language do you need.



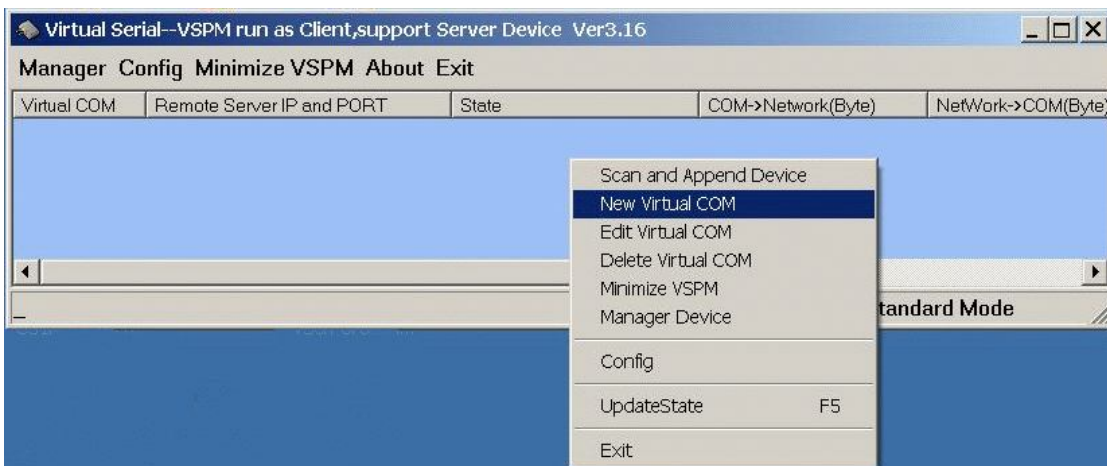
Step4. Click “OK” button and select “VSP run as Client support Server Device”.



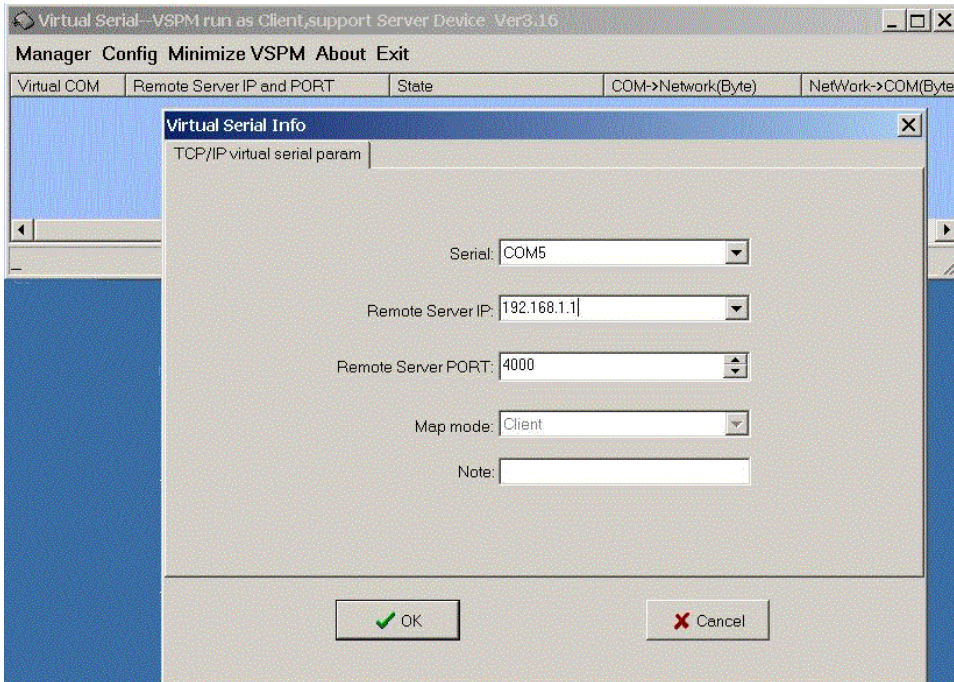
Step5. Select “Create virtual serial by device scanner”, then press “OK”



Step6. Run VCOMM.exe then click right button select “New Virtual COM”

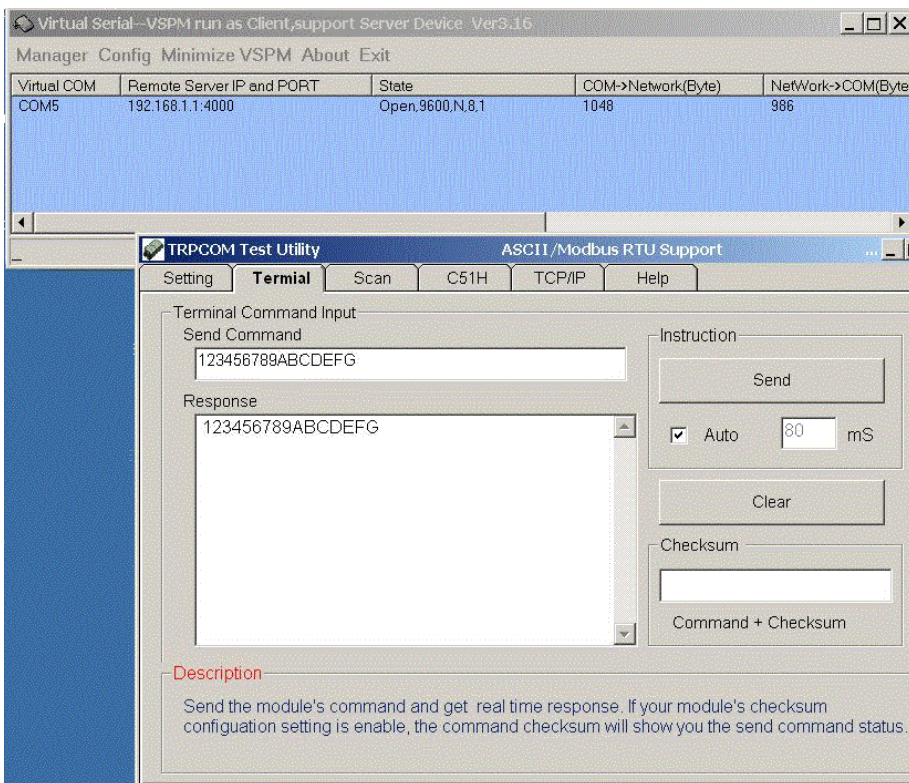


Step7. Select “Select Serial Port” and input TRP-C37M IP and port then press “OK”.

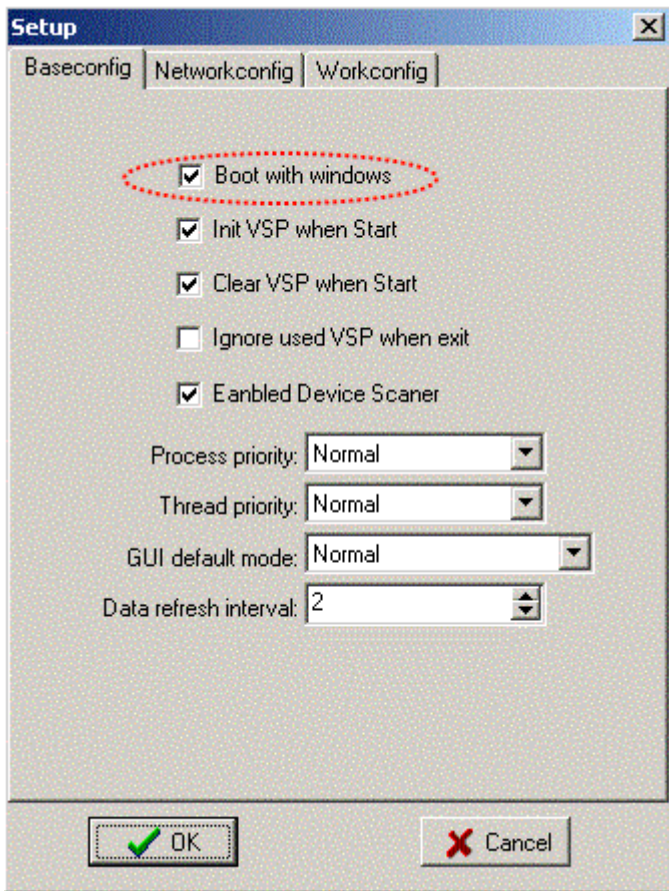


Step8. If Virtual-Com setting success, the display will appear bellow.

Step9. Run TRPCOM utility then select virtual-com port make a TRP-C37M loop test.



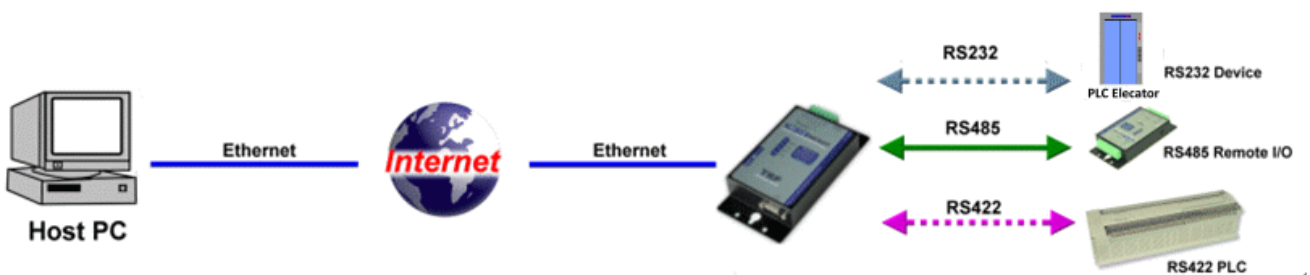
*If in VCOMM's configuration select "Boot with windows", the virtual-com will Auto-connection when windows start.



6. Application

6-1 Modbus TCP Master to Serial Slave Mode

***Notice: If TRP-C37M is MODBUS RTU protocol, Please turn the switch 1,2 to OFF,OFF.
OR if TRP-C37M device is MODBUS ASCII, Please turn the switch1,2 to OFF,ON.**

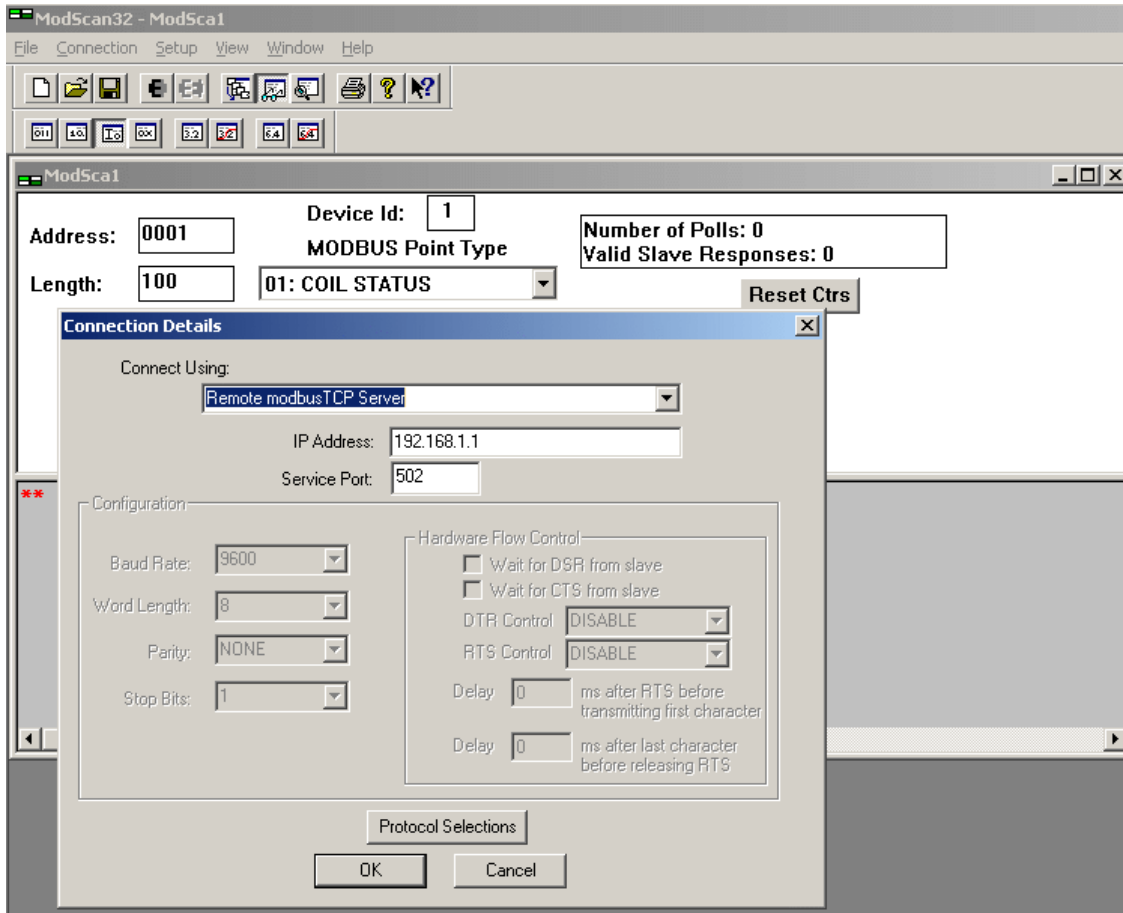


Example:

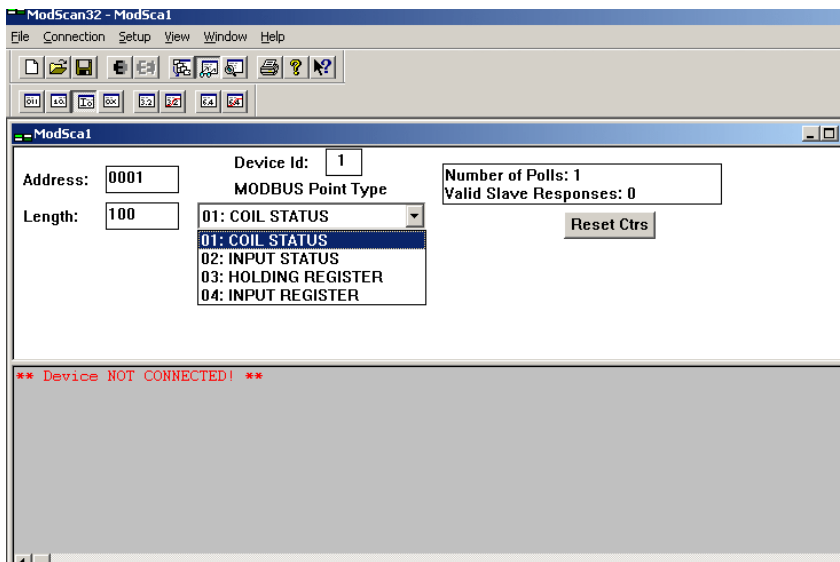
Step1: Connect PC-----Ethernet-----TRP-C37M-----RS232/422/485---MODBUS RTU/ASCII device.

Step2.Run Modscan32 utility and input IP/Port, click “OK” button, then Select function code, the response will appear below.

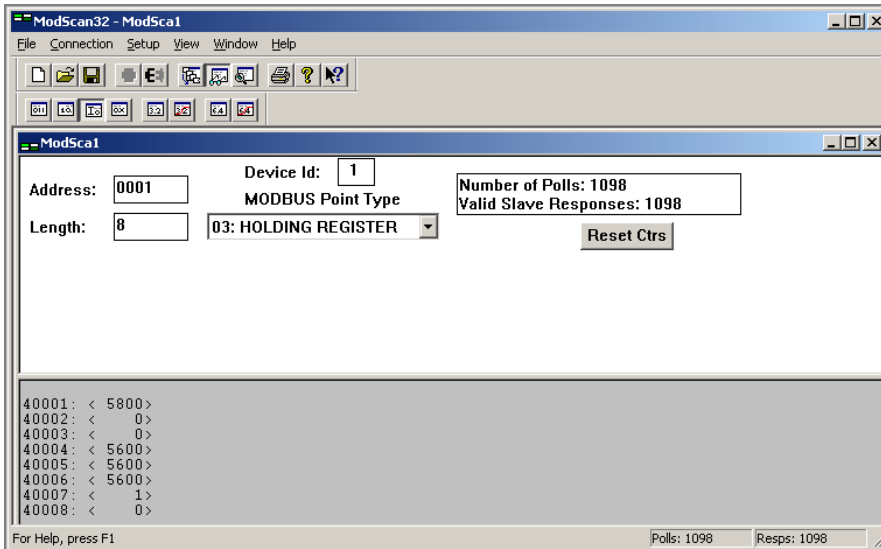
***The Modscan32 utility copyright belong the Win-TECH Software Design, user can find it from the www.win-tech.com.**



Step3.Select function code.

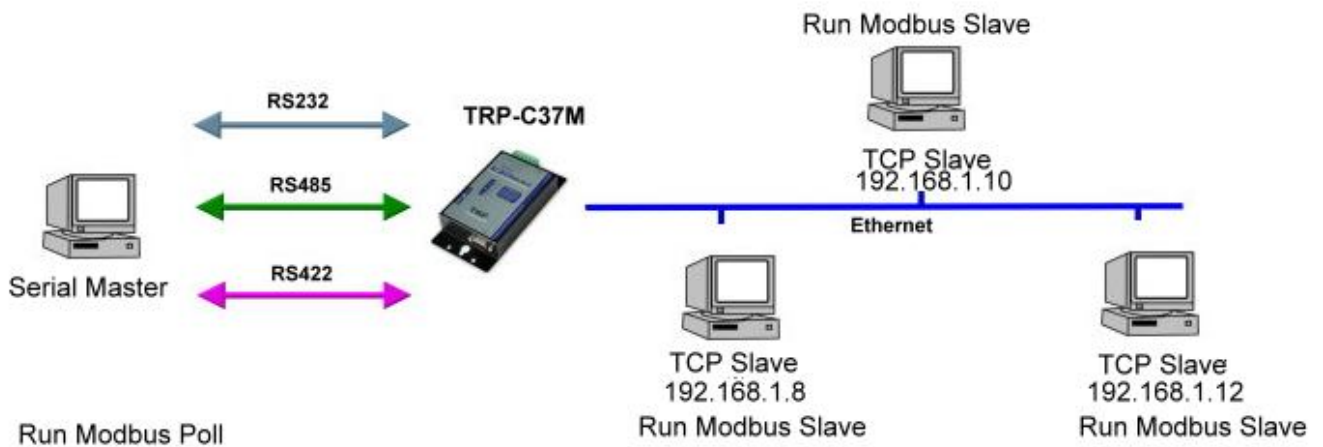


Step4.the modscan32 will be response below.



6-2 Modbus TCP Slave to Serial Master

***Notice: If TRP-C37M is MODBUS RTU protocol, Please turn the switch 1,2 to OFF,OFF.
OR if TRP-C37M device is MODBUS ASCII, Please turn the switch1,2 to OFF,ON.**



Example:

Step1: Connect Serial Master PC-----RS232-----TRP-C37M-----Ethernet---Multi TCP Slave PC.

Step2: Run DSM Search the TRP-C37M and change the setting.

Device Setup

Network Setting | **Serial Port Setting**

Device Name: TRP-C37M Module Name: TRP-C37M

MAC Address: 00-0E-C6-00-02-04 Netmask: 255.255.255.0

DHCP: Enable

Server/Master Listening IP: 192.168.1.1 Gateway: 192.168.1.3

Client/Slave Data listening port: 502 DNS Server: 168.95.1.1

Transmit Timer (ms): 10

Heart Beat: Disable

UID	Range	Client/Slave IP Address	Port
1	To 8	192.168.1.8	502
9	To 16	0.0.0.0	502
17	To 24	0.0.0.0	502
25	To 32	0.0.0.0	502
33	To 40	0.0.0.0	502
41	To 48	0.0.0.0	502
49	To 56	0.0.0.0	502
57	To 64	0.0.0.0	502

Maximun Connection: 1

TCP Keep Alive Timer: 7

New Password:

Firmware Version: 352

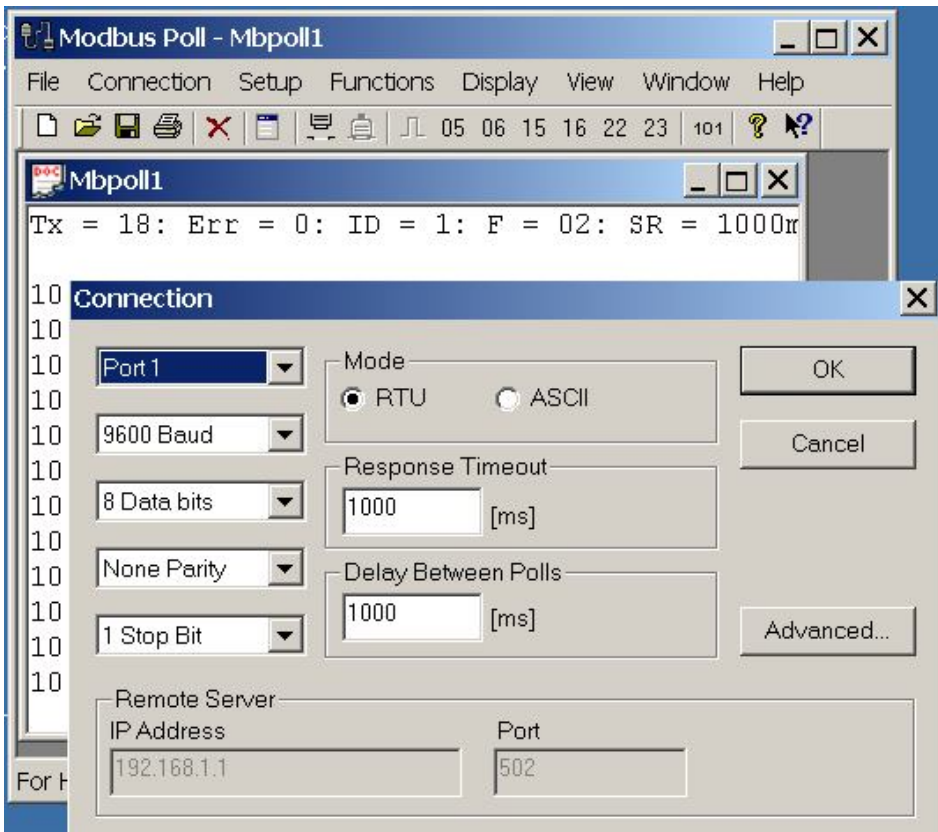
Data Packet Type: UDP, Auto connect after reboot, TCP

Management Packet Type: Broadcast, Multicast

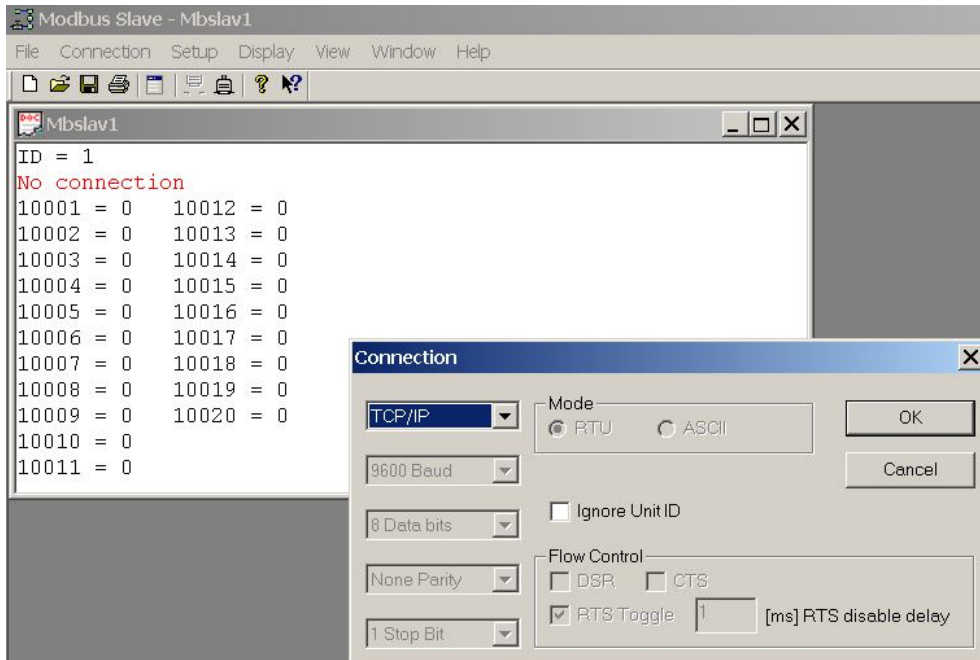
Submit Save Load

Step3: Run Modbus Poll utility from serial master PC.

****The Modbus Poll and Modbus Slave utility copyright belong the Witte Communications Company Design; user can find it from the www.modbustools.com.***

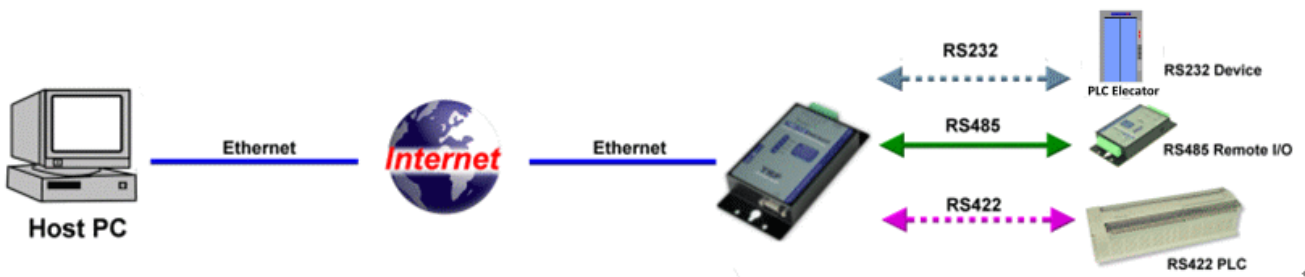


Step4: Run Modbus Slave utility from TCP Slave PC and setting the function code as same as the Modbus poll.



6-3 Virtual COM Mode *Bridge Mode

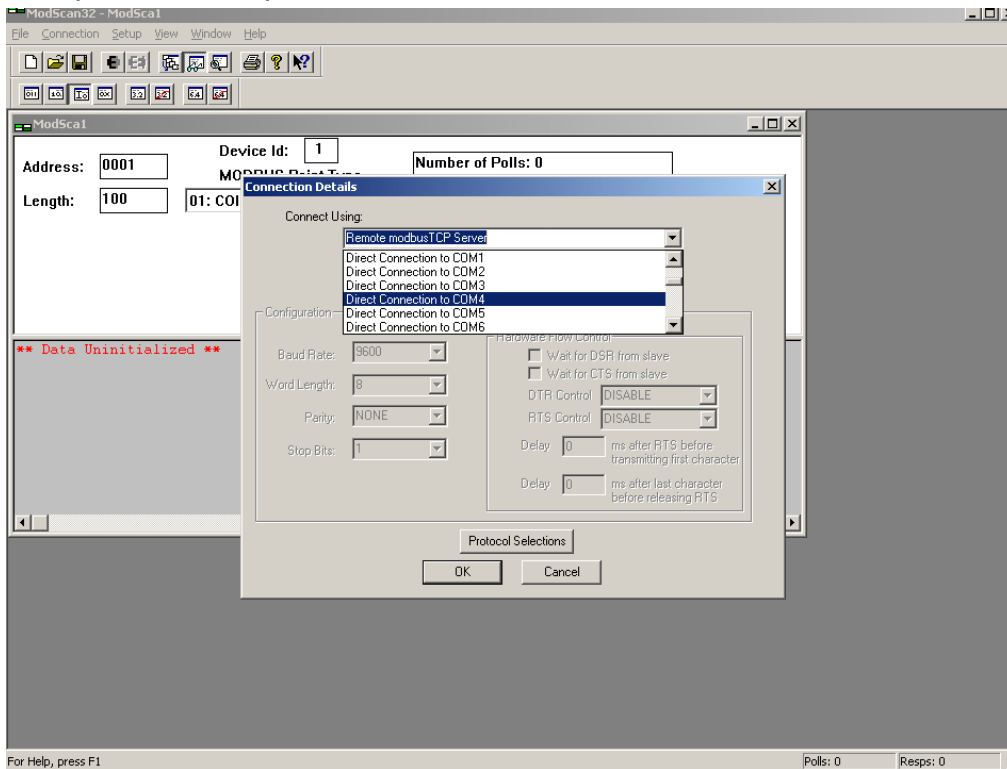
*Notice: Please turn the switch 1,2 to ON,OFF for Virtual-COM Mode.



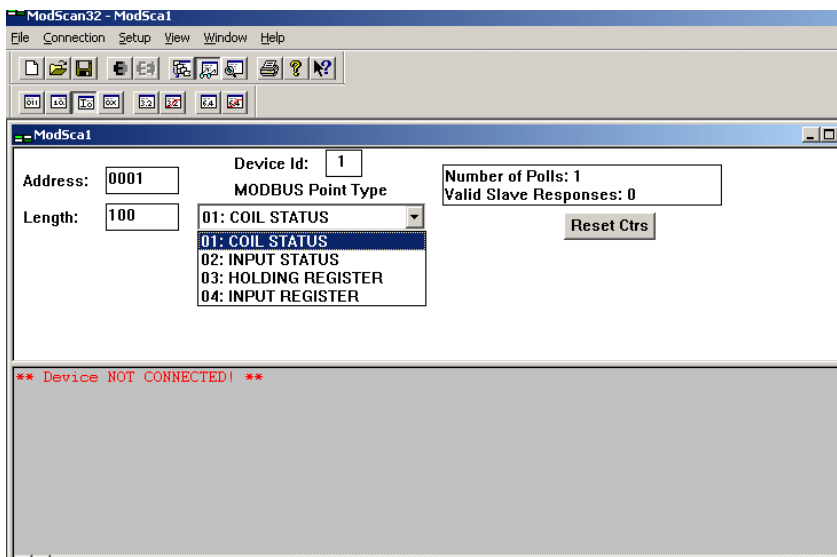
Example:

Step1. Connect PC-----Ethernet-----TRP-C37M-----RS232/422/485---MODBUS RTU/ASCII device.

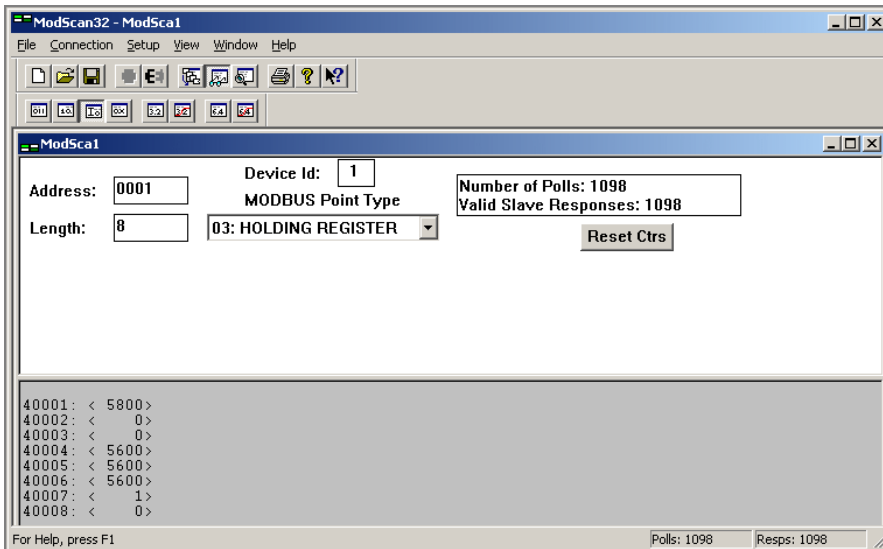
Step2. Run Virtual-COM utility and make a virtual-COM port, Run modscan32 utility and input com port number, press “OK”.



Step3. Select function code which you need.

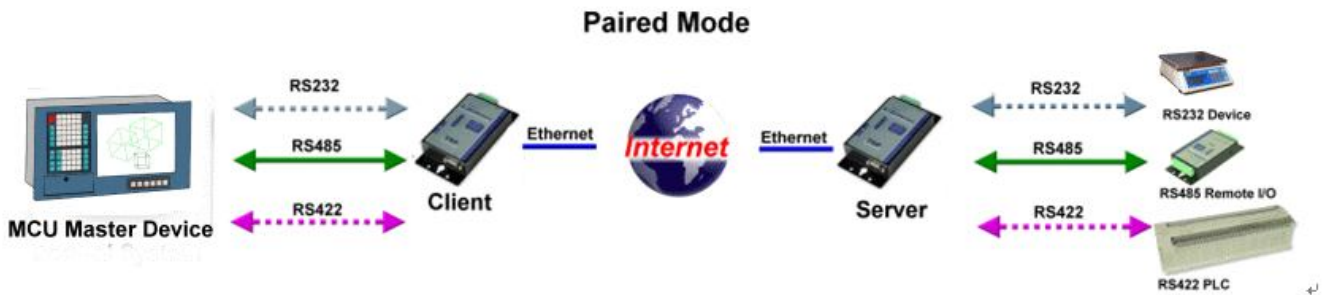


Step4.the modscan32 will be response below.



6-4 Paired Mode *Bridge Mode

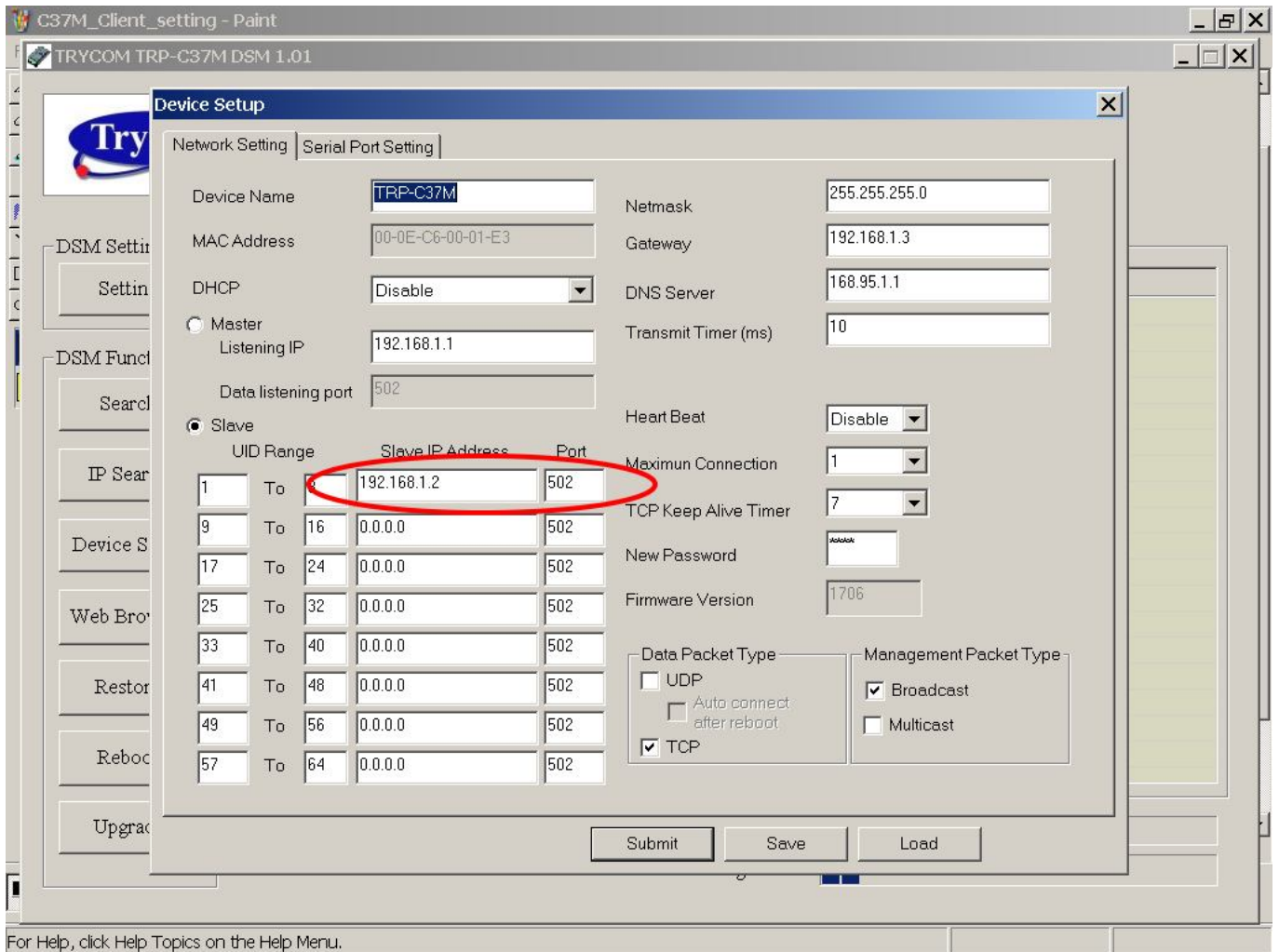
*Notice: Please turn the switch 1,2 to ON,OFF for Paired Mode.



Example:

Step1. Connect PC---RS232/422/485---TRP-C37M----Ethernet-----TRP-C37M----MODBUS RTU/ASCII slave device.

Step2.Run DSM set up **TRP-C37M as Client**, Input destination IP and Port.



Step3.Run DSM set up **TRP-C37M as Server** and be sure the IP and port as same as client setting.

Network Setting | Serial Port Setting

Device Name: TRP-C37M

MAC Address: 00-0E-C6-00-01-E3

DHCP: Disable

Netmask: 255.255.255.0

Gateway: 192.168.1.3

DNS Server: 168.95.1.1

Transmit Timer (ms): 10

Master

Listening IP: 192.168.1.2

Data listening port: 502

Slave

UID	Range	Slave IP Address	Port
1	To 8	0.0.0.0	502
9	To 16	0.0.0.0	502
17	To 24	0.0.0.0	502
25	To 32	0.0.0.0	502
33	To 40	0.0.0.0	502
41	To 48	0.0.0.0	502
49	To 56	0.0.0.0	502
57	To 64	0.0.0.0	502

Heart Beat: Disable

Maximum Connection: 1

TCP Keep Alive Timer: 7

New Password: ****

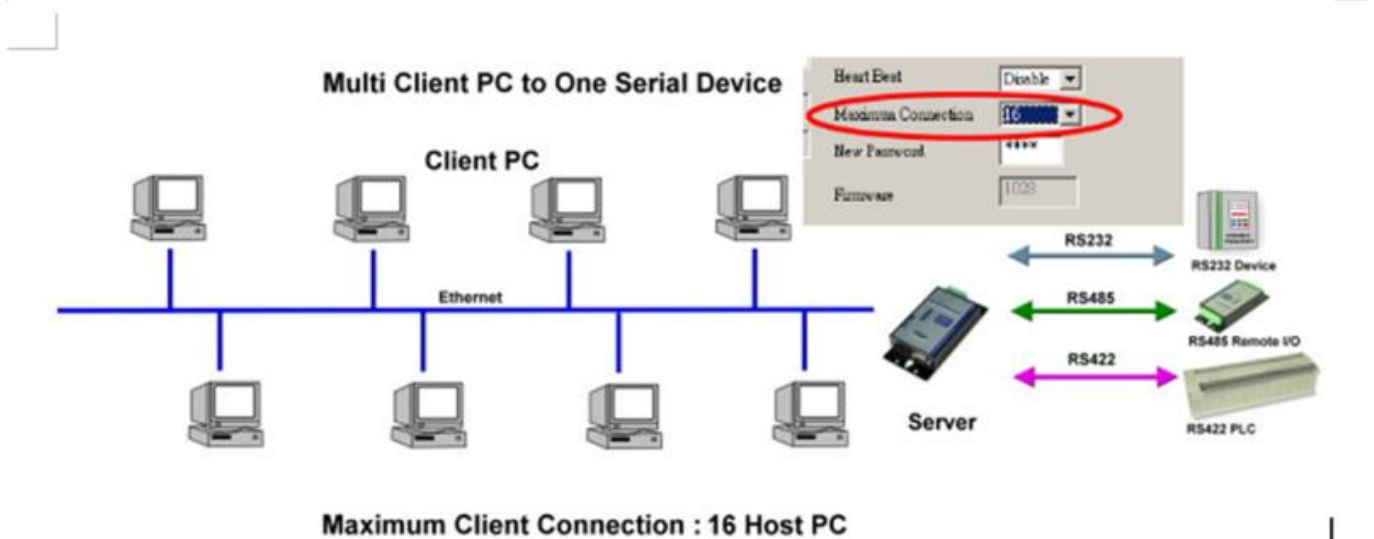
Firmware Version: 1706

Data Packet Type: UDP, Auto connect after reboot, TCP

Management Packet Type: Broadcast, Multicast

Same step3 and step4 same refer above.

6-5 Multi-Client to 1 TRP-C37M Server



Example:

***Running at Multi-Direct IP Mode**

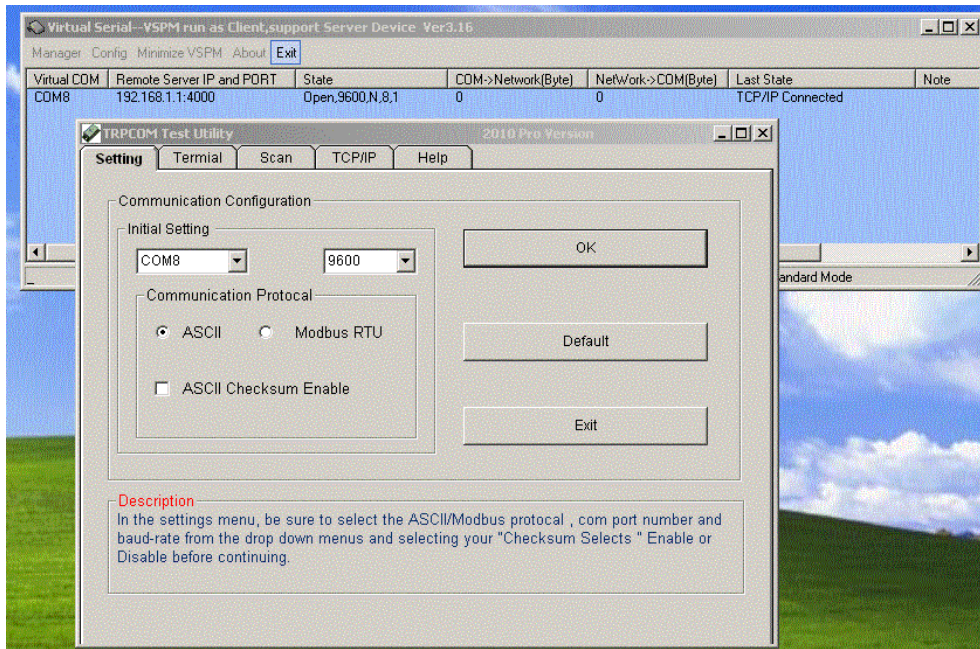
Step1. Connect Multi-PC ---Ethernet---TRP-C37M Server---TRP-C28 (RS485 ID=1)

Step2. Run DSM Set up **TRP-C37M** Maximum connection=16.

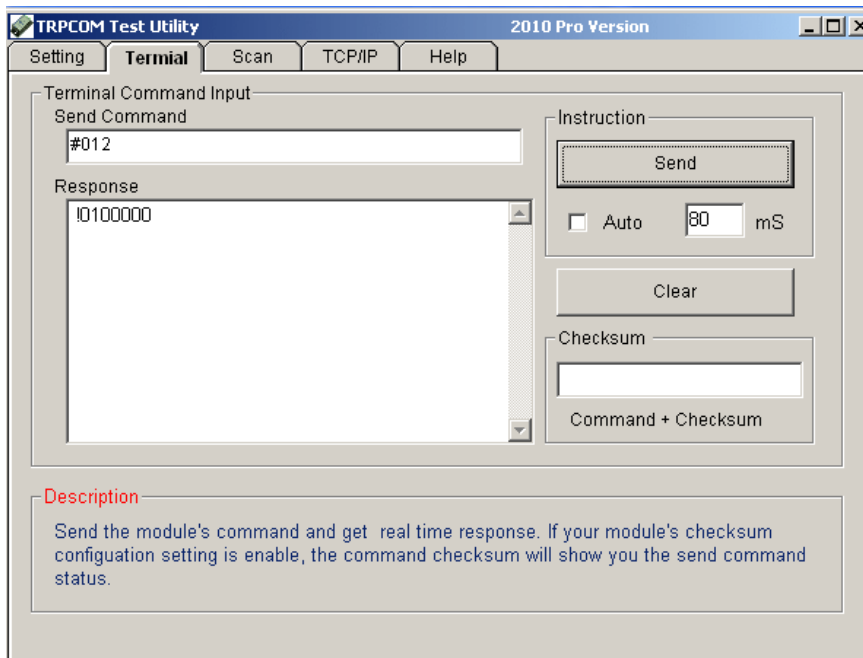
Step3.All host PC run Modscan32.

***Running in Multi-Virtual COM Mode**

Step1. All PC run Virtual com utility and make a self virtual-COM port, Run TRPCOM utility and select com port number, and press “OK”.

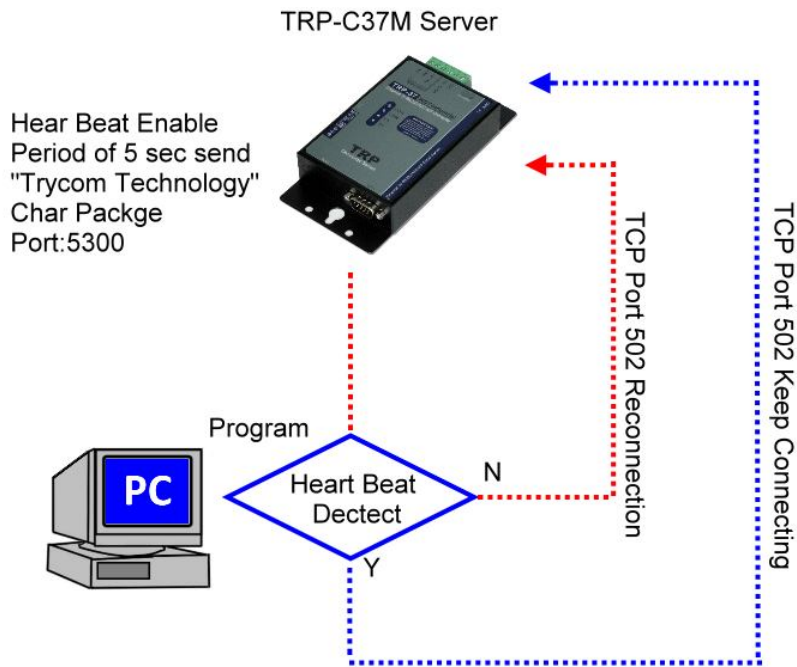


Step3.Select “Terminal” and send command, the response will appear TRP-C28 channel 2 counter value.

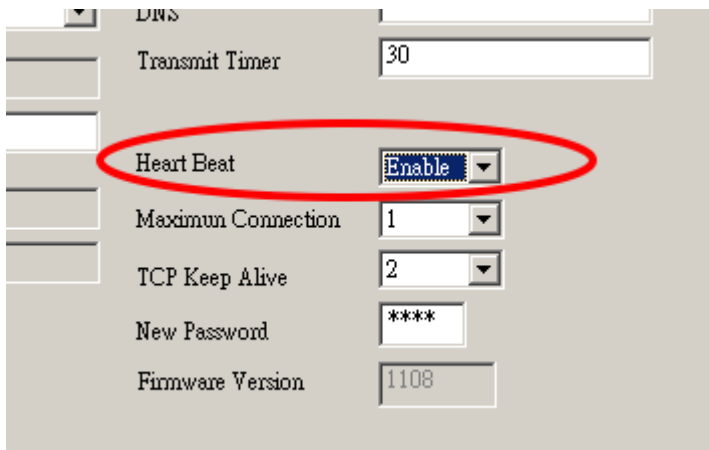


6-6 Heart Beat

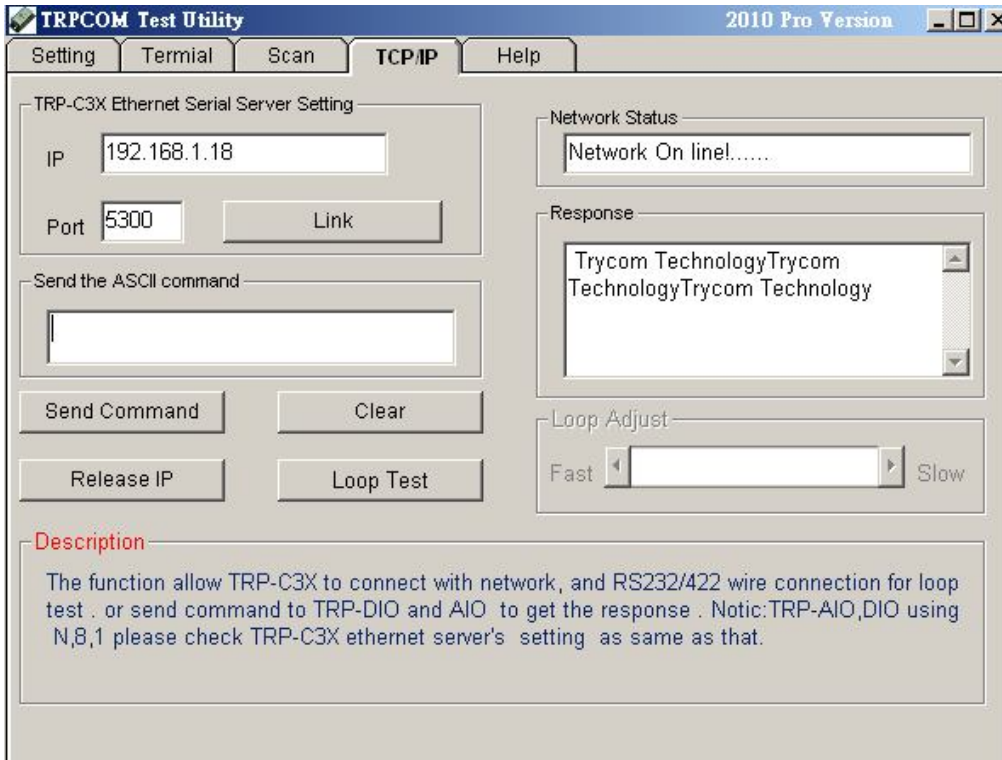
The heart Beat function help customer detection the TRP-C37M LAN on-line or off-line, User can open one 5300 port, if TRP-C37M on line, the 5300 port will send a char staring period of 5 sec.



Step1: Run TRP-C37X DSM utility to set up the heart beat enable.



Step2: RUN TRPCOM then click "Link" button
Wait until the Response screen appear the message



Step3: Click windows start then select Accessories then click “Command Prompt”, type dos command telnet 192.168.1.1 5300



Wait until the Response screen appear the char message

7. Using TRPCOM Utility test TRP-C37M.

We recommend use the virtual-com mode test all RS232/422/485 function.

***Please turn the switch 1,2 to ON,OFF**

*Support all ASCII and Binary code includes MODBUS RTU/ASCII Protocol in Virtual-com Mode.

TRPCOM Utility is demo utility which may help to test TRP-C37M UART interface .User may

find the utility in the TRP-C37M support CD. Double click “TRPCOM Utility”, the installShield Wizard will guide you complete installation.

User can directly link TRP-C37M to TRP-Serial Remote IO Modules by RS485, The basic wiring connect.

RS485 Test

DATA+ to DATA+, DATA- to DATA-

DATA+ to DATA+, DATA- to DATA-

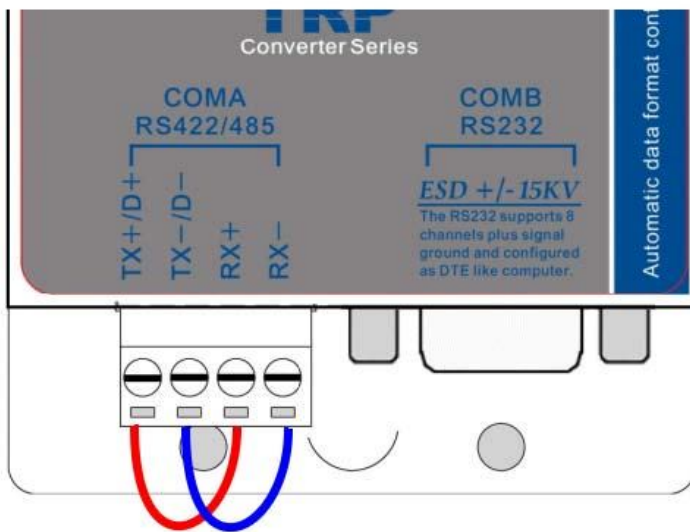


How to operator please see the diagram below.

RS422 Loop back Test

Hardware connects wiring for RS422 loop test.

TX+ to RX+, TX- to RX-

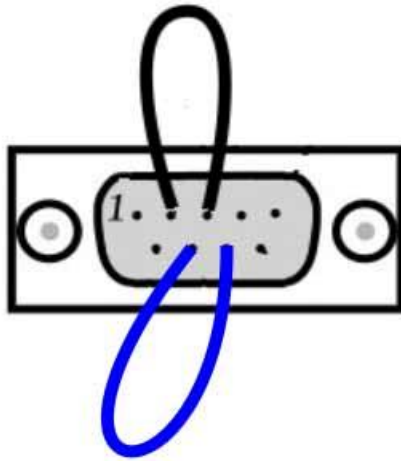


RS232 Loop Back Test

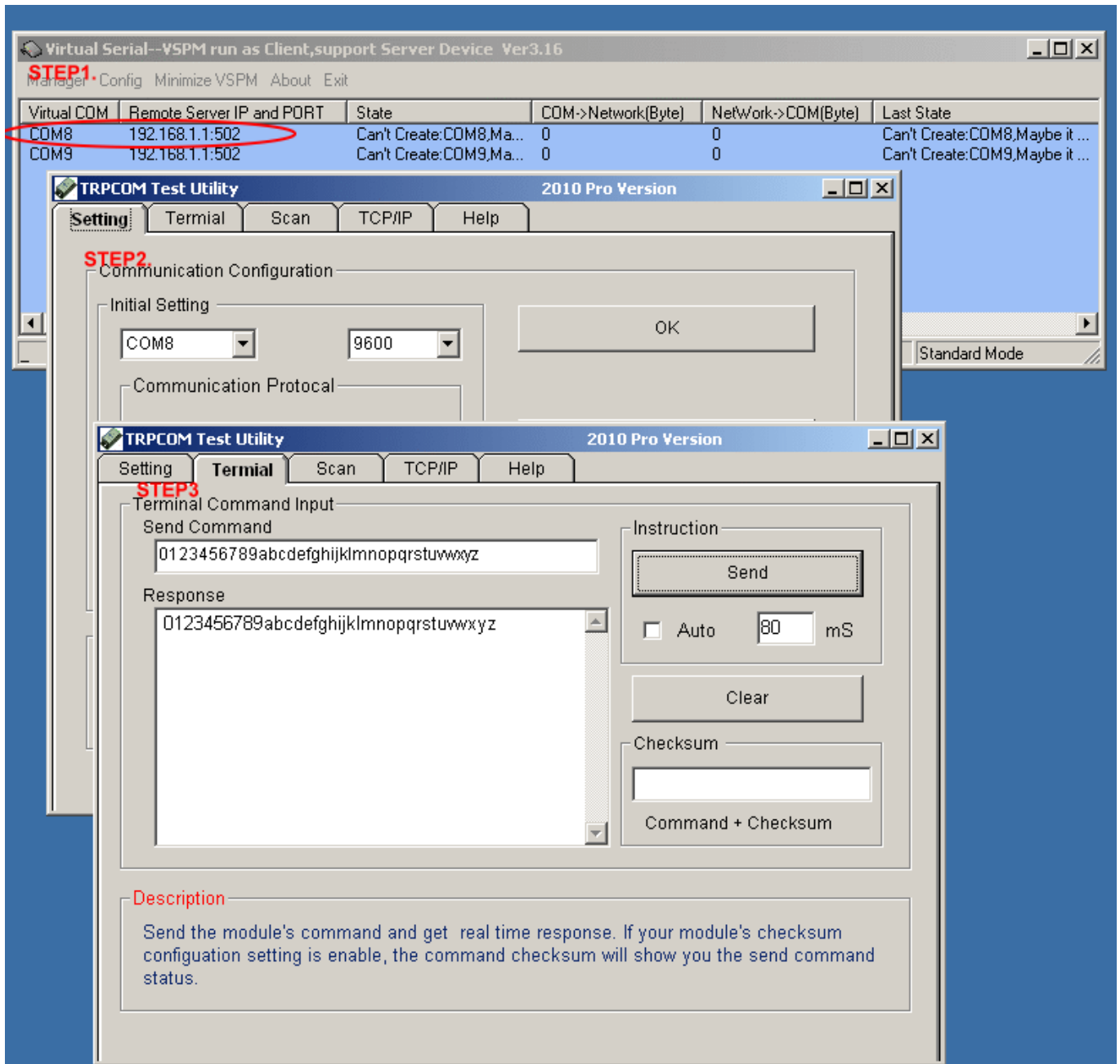
Hardware wiring connection for RS232 Loop Test.

TXD to RXD, RTS to CTS.

Pin2,3 Short
Pin7,8 Short

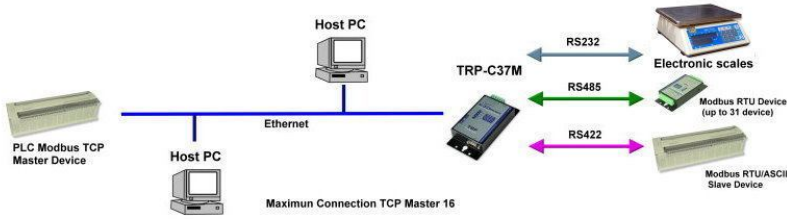


- STEP1.RUN Virtual COM utility and set up the TRP-C37M IP and PORT.
- STEP2.RUN TRPCOM test utility then select virtual-com port number.
- STEP3.Select terminal and key-in some word at “send command” text filed.
- STEP4.Click “Send Command” and get response.

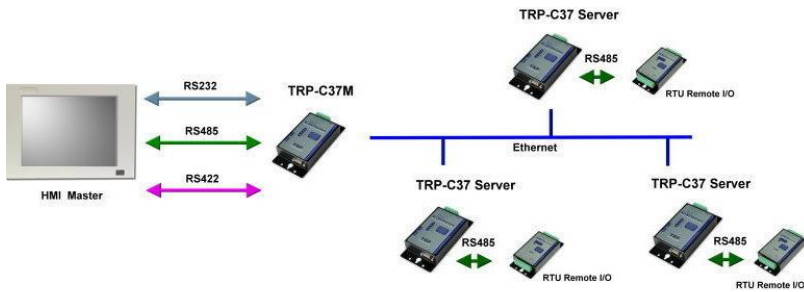
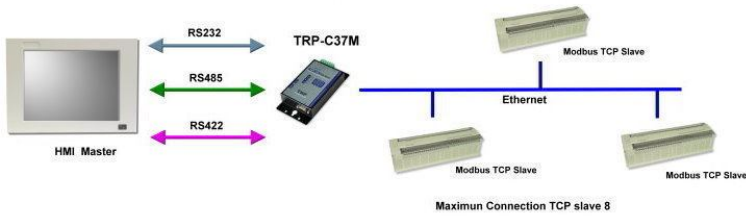


7. Application.

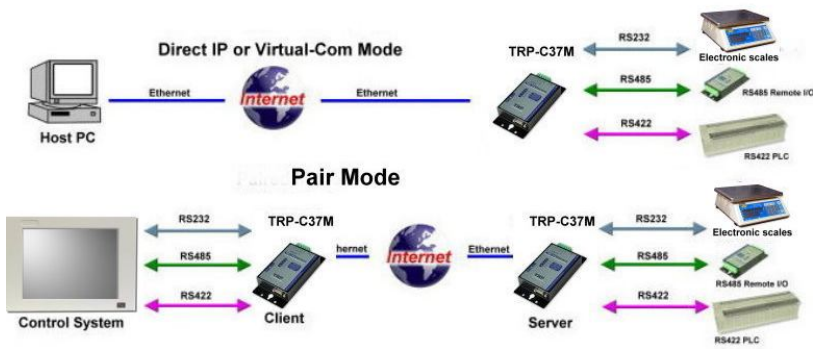
Modbus TCP Master to Serial Slave Mode



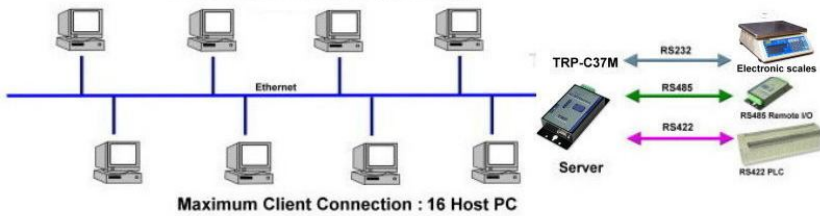
Modbus TCP Slave to Serial Master Mode



Bridge Mode Dip switch 1,2 ON,OFF



Multi Client PC to One Serial Device



One TRP-C37M Server to Multi Client PC

