

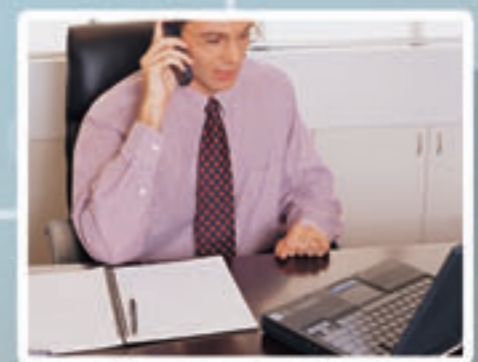
PIXORD

Moving Pictures Around The World

www.pixord.com

Video Server / Network Camera

- ▶ Remote surveillance via network
- ▶ Web server inside
- ▶ 30/25 frames per second live video
- ▶ Motion detection built-in



Pixord Internet video server / Network Camera provides a total solution for your needs of remote and real-time surveillance.

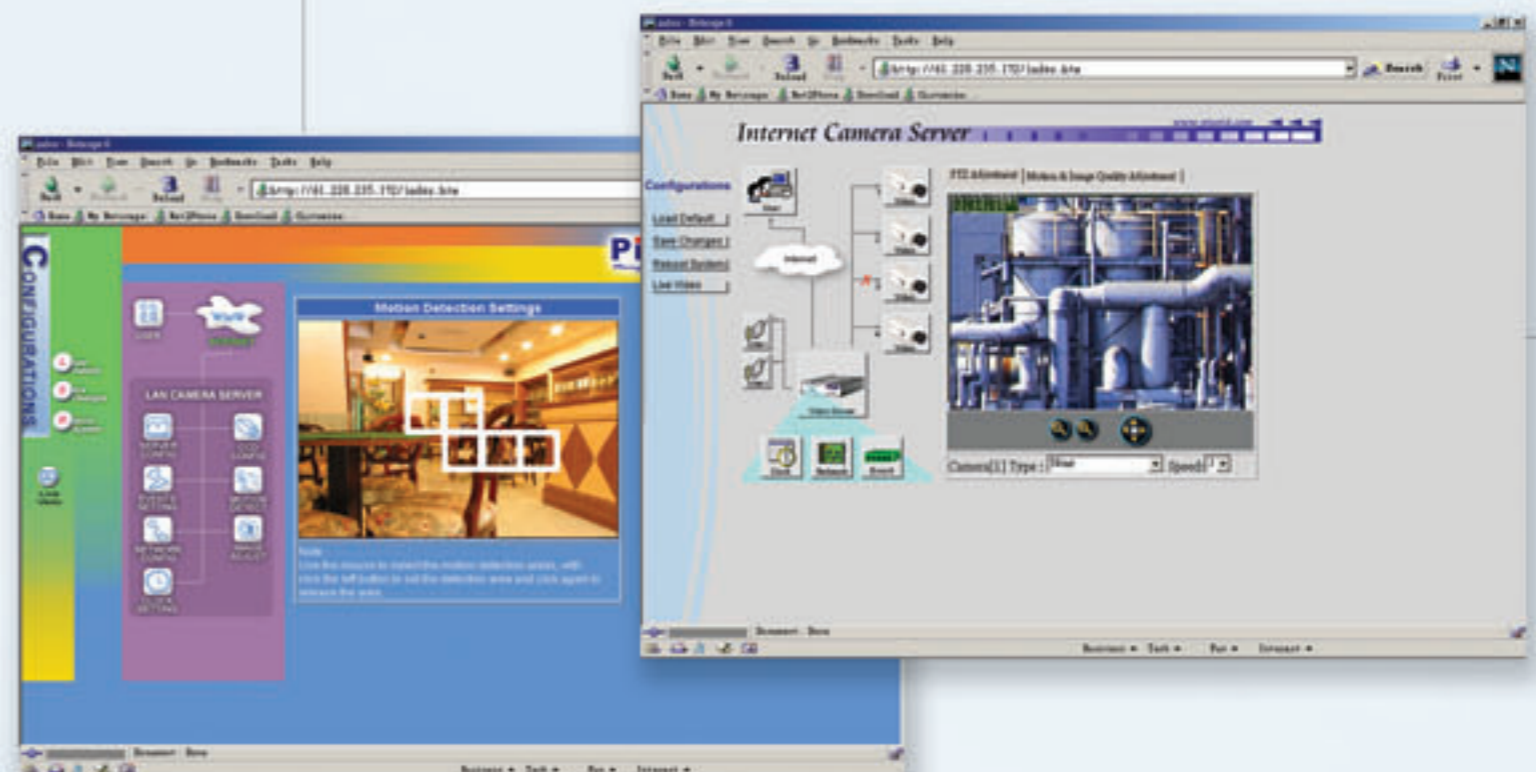
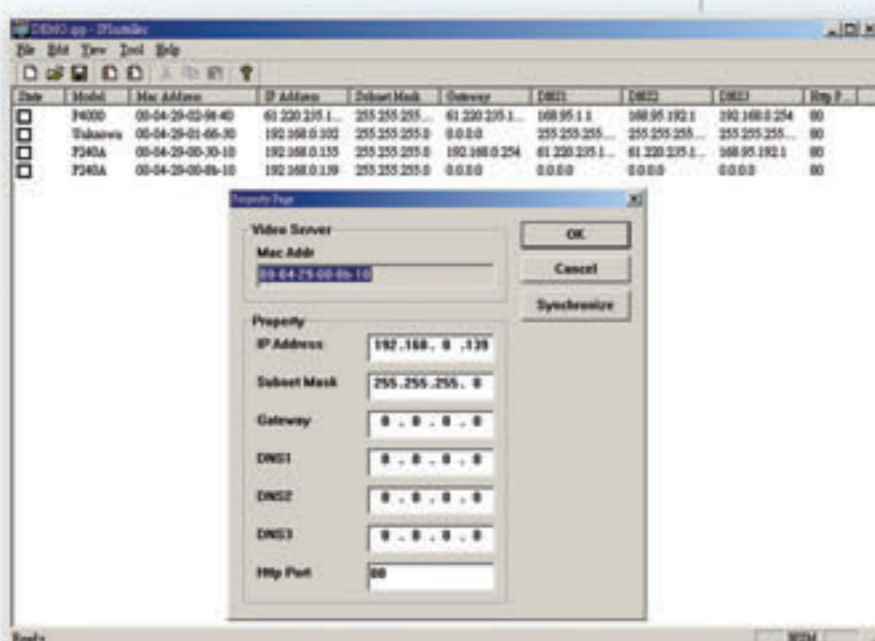
This stand-alone server compresses images and transmits real-time video via types of network, such as the Internet, corporate LAN, XDSL, ADSL, Cable Modem, ISDN and Leased Line. Pixord Internet Video Server / Network Camera (here after called PIXORD NVS) makes it easier to view the real-time video through the Internet. Doing the remote monitoring is exactly as easy as what you're used to surfing on the Net by the web browsers from anywhere in the world.



Features:



- Embedded Web Server To Watch Live Video Over The Internet Via Net Browser
- Server Operating Control Through CGI Base Script Which Is Easy For Application Intergration
- JAVA / ActiveX Base Web Page Providing Maximum Platform Compatibility
- Flexible Design, Enabling Customized Web Pages And Remote Firmware Upgrade
- Plug & Play, No Additional Softwares Needed
- CCD Module Built-In Providing An All-In-One System (Network Camera Only)
- Video Adjustment Including Brightness, Contrast, Hue, Saturation And Quality
- Remote PTZ Camera Control
- IP Assignment Via IP Installer, Arp/Web Page, Easy For User To Install
- Rich GPIO/COM And Programmable Event Script Function, Easy For Various Application
- Motion Detection / Date / Time / GPIO Input For Event Trigger
- Email / FTP / Relay Out Internal Buffer Storage For Event Action



Applications:



Environment surveillance:
Through Pixord NVS, the related authorities can monitor the situation of ecological protection area.



Financial Institutes:
Pixord NVS is available for monitoring ATM in banks and making sure what kind of persons drop by.



Manufacturers:
Production lines can be monitored from remote control center in real time.



Rest Home:
You can check the health condition of the aged.



Marketing:
You can Use Pixord NVS for live demo of your productions.



Famous Scenic Spots:
Before you plan to take a trip, you can realize the present situations, such as weather, facilities, and so on.



House Security:
If a intruder bursts into your home, you will receive a warning signal about the illegal intrusion through Pixord NVS.



Traffic Monitoring:
Traffic control center can use Pixord NVS to effectively monitor the national roads and super high ways.



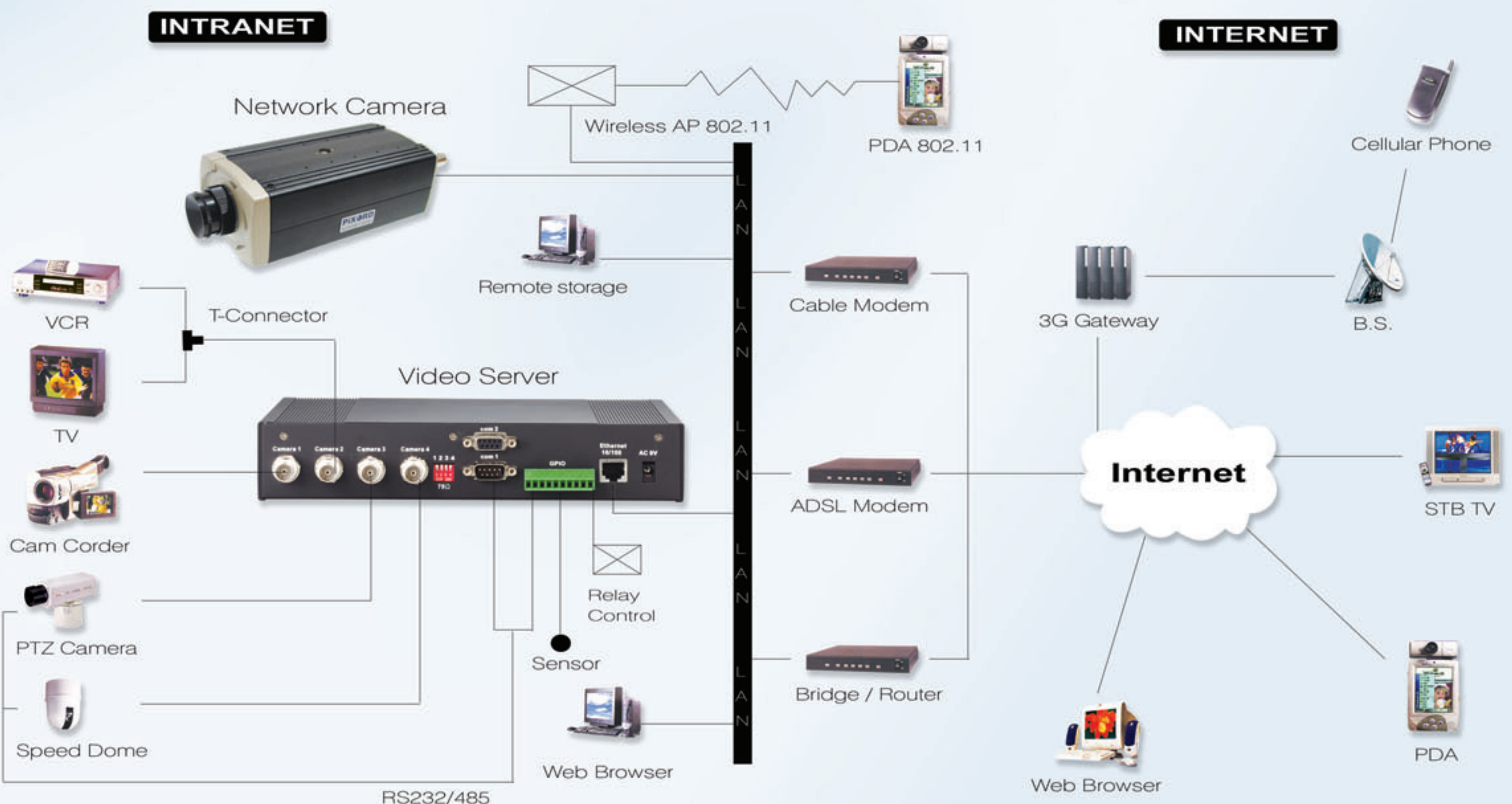
Intelligence Institutes:
Help special agents to collect evidences.



Worldwide Industry:
You can effectively manage the operation facilities, and sales amount of branches scattered around the world by using Pixord NVS.

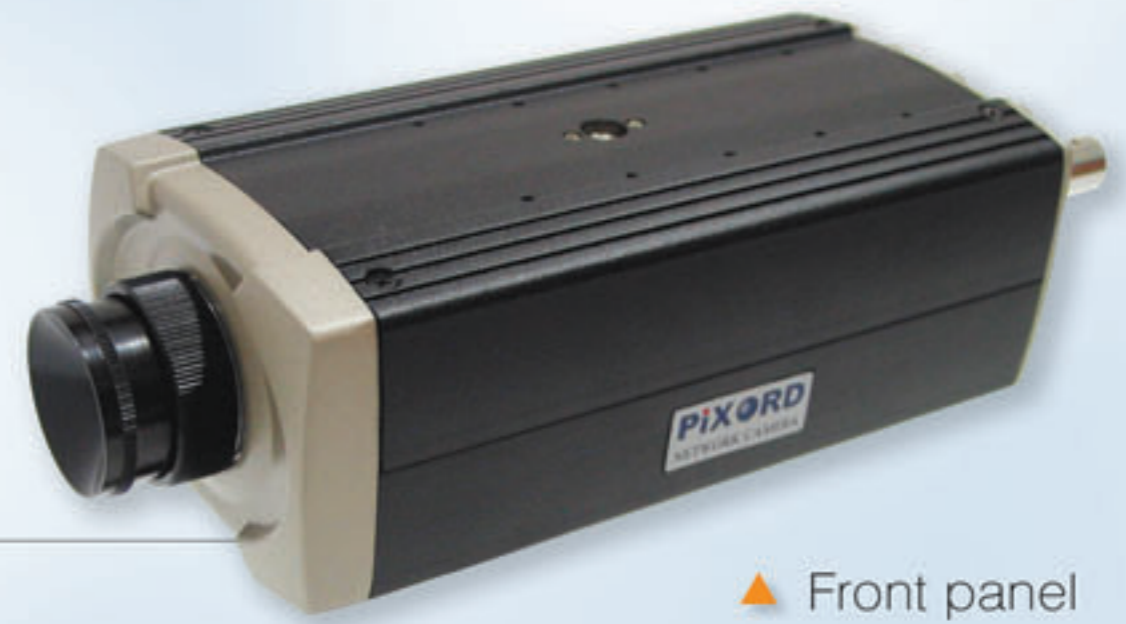
PIXORD Video Server / Network Camera Applications

Applications Architecture:



Specifications:

▶ PIXORD Network Camera



▲ Front panel








Desktop



Ceiling-Mount






Wall-Mount

Model	PIXORD-100	PIXORD-120	PIXORD-200	PIXORD-240	PIXORD-241	
Specifications						
Video Channel	1 Internal CCD	1 Internal CCD 1 Internal CCD Output 1 External Video Input	1 Internal CCD	1 Internal CCD 1 Internal CCD Output 3 External Video Inputs	1 Internal CCD 1 Internal CCD Output 3 External Video Inputs	
Internal CCD Camera	<ul style="list-style-type: none"> - Sensor - Sensitivity 					
Video Control	<ul style="list-style-type: none"> - Through administrator's page, including - White Balance (ATW) - Automatic Gain Control (On) - Manual Electronic Shutter (1/50 or 1/60 when AES off) - Auto Electronic Shutter (AES on/off, BLC on/off) - Day/Night feature (Color/B.W. auto switch in low illumination) 		<ul style="list-style-type: none"> - White Balance (ATW/Push/Indoor/Outdoor) - Automatic Gain Control (On/Off) - Manual Electronic Shutter (Since 1/60 ~ 1/10000) - Auto Electronic Shutter (AES on/off, BLC on/off, Flickerless mode on/off) - Line Lock Feature (Internal/ External to avoid color rolling) 			
Mount Lens	<ul style="list-style-type: none"> - Standard Package: equipped with CS mount Focal length 6.0mm F1.8 Lens - Supporting of Direct Drive Lens; Build-in VR for DC level adjustment - Optional: Focal length 4.0mm, Auto DC Iris F1.2~64 Lens - Optional: Zoom Vari-Focal length 3.2~10mm, Auto DC Iris F1.4~360 Lens 					
Hardware	<ul style="list-style-type: none"> - CPU: 32 Bits RISC Processor - ROM: 2M Bytes Flash ROM - RAM: 16M Bytes SDRAM - WatchDog: Chip to monitor out tolerance system voltage and abnormal program execution - Two LEDs to indicate network and power/system status - One RJ-45 for Ethernet - One RS-232 serial port for external console 					
		<ul style="list-style-type: none"> - One RS-232/485 port for PTZ (pan/tilt/zoom) camera control 	<ul style="list-style-type: none"> - One RS-485 port for PTZ (pan/tilt/zoom) camera control 			
	<ul style="list-style-type: none"> - Four fully opto-isolated alarm inputs and one 3A, 125VAC/30VDC Relay output 					
Network Interface	- Ethernet (10 Base-T)					
Image Compression	- JPEG; Motion JPEG					
Video Adjustment	- Brightness, Contrast, Hue, Saturation, Quality Level adjustment					
Protocols	- TCP/IP, UDP, ARP, ICMP, HTTP, FTP, Telnet, SMTP, DHCP					
Max. Resolution	<ul style="list-style-type: none"> - NTSC: 704x480(Single), 352x240(Quad) - PAL: 704x576(Single), 352x288(Quad) 					
Performance	<ul style="list-style-type: none"> - Network throughput: Max. up to 800K bytes per second, 30 connections simultaneously - Video throughput: Up to 30 frames per second / Single Video 			- 3 fps / Dual Video	- 3 fps / Quad Video	- 12 fps / Quad Video
Event Trigger & Action	<ul style="list-style-type: none"> - Programmable Event Script with Wizard supported. - Triggered by: Time (Frequency) / GPIO Input/ Motion Detection/ Video/ Network Connection/ CGI etc. - Action: Store image to internal buffer (2M Bytes pre- and post-alarm); FTP image to remote site; E-mail image to specific account; HTTP server push to remote site; relay output to control external devices; etc. 					
Installation	- Assign IP address: using ARP & Ping or IP-Installer software					
Software Upgrade	<ul style="list-style-type: none"> - Local or Remote software up-gradable using FTP - Custom web contents updated via FTP & Telnet 					
System Requirements	- Standard browser such as Microsoft IE4.x or 5.x or above, or Netscape Navigator 4.x running on Win95/98/NT, Linux.					
Security	- Three-layer Password Protection					
Operating Temperature	- 5 ~50 (40 ~ 125)					
Operating Humidity	- 20 ~80 %					
Input Voltage	- DC 12V, 1A		- AC 14V / 13.8V, 1A			
Power Consumption	- 7 watts					
Dimension Weight	- 168(L)*77(W)*54(H) mm 1.1KG					
Accessories	<ul style="list-style-type: none"> - CD Title with manual/software, Quick Installation Guide, Ethernet Cable, CS adapter, CS Ring adjust tool, Power Adapter, Stand for Desktop/Wall/Ceiling 					
		<ul style="list-style-type: none"> - One Cable connected an external video input from Terminal Block to BNC 	<ul style="list-style-type: none"> - One cable convert MiniDin to Dsub, to connect Com port or GPIO 			

▶ PIXORD Video Server

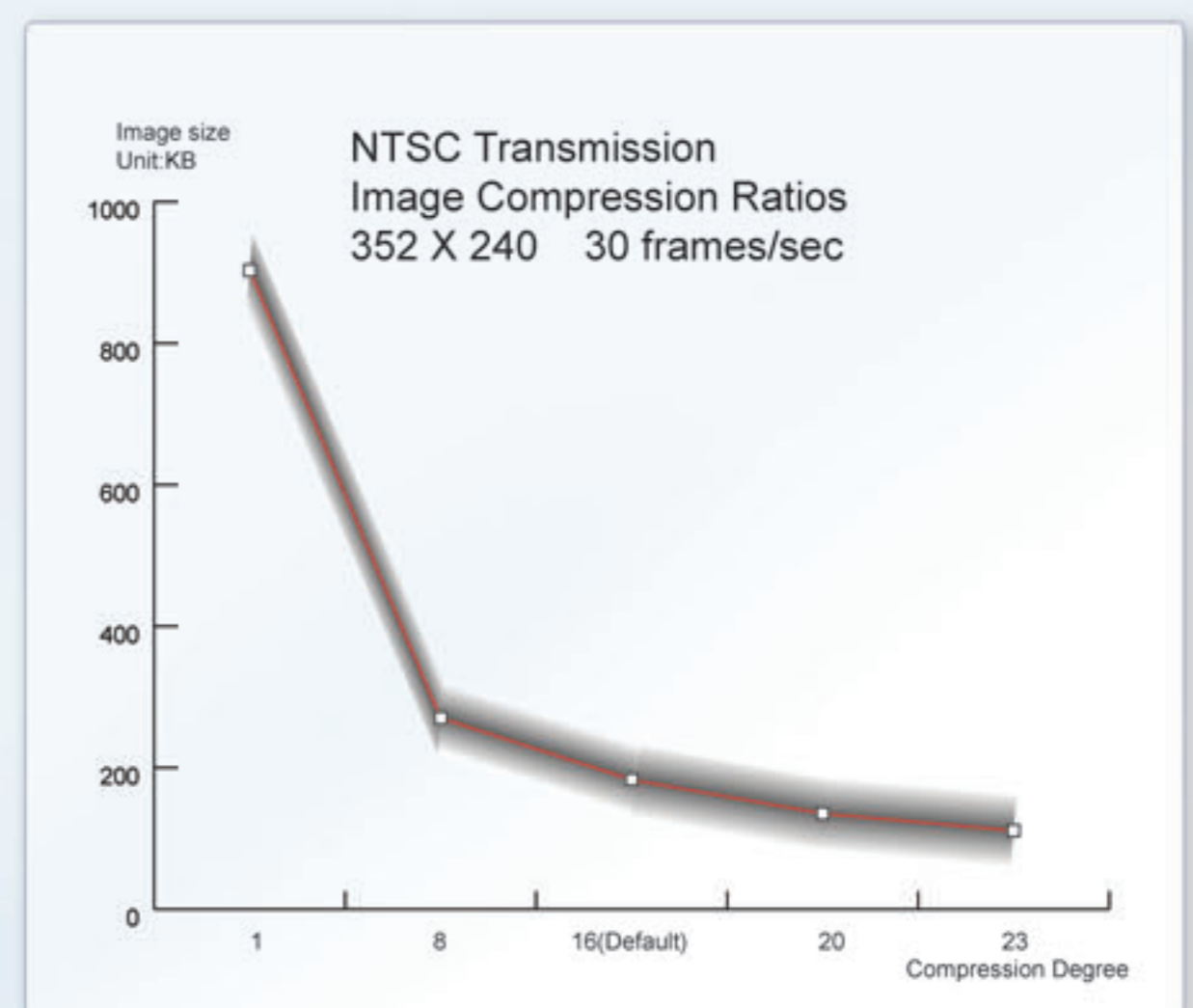


▲ Front panel

Model	PIXORD 4000	PIXORD 2000	PIXORD 1000
Specifications			
Video Input	4 Channels	2 Channels	1 Channel
	1.0 Vp-p, 75Ω, Composite, BNC, Auto detection NTSC/PAL		
Hardware	CPU: 32 Bits RISC Processor ROM: 2M Bytes FlashROM RAM: 16M Bytes SDRAM WatchDog: Chip to monitor out tolerance system voltage and abnormal program execution Two RS-232 serial ports, one for external modem, one for PTZ camera/PC/RS-485 ; One RJ-45 for 10 Mbps Ethernet Two LEDs to indicate network and power/system status GPIO with fully opto-isolated four alarm inputs and one relay output		
Network Interface	Ethernet (10 Base-T)		
Image Compression	JPEG; Motion JPEG		
Video Adjustment	Brightness, Contrast, Hue, Saturation, Quality Level adjust		
Protocols	TCP/UDP/IP, ARP, ICMP, HTTP, FTP, Telnet, SMTP, DHCP		
Max. Resolution	NTSC: 704x480(Single), 352x240(Quad) PAL: 704x576(Single), 352x288(Quad)		
Performance	Video through put : Up to 30 frames/ second Network through put : Max. up to 800 K Bytes per Second		
Event Trigger & Action	Programmable Event Script with Wizard supported. Triggered by: Time(Frequency) / GPIO Input/ Motion Detection Action : - Store image to internal buffer - FTP image to remote site - E-mail image to specify account - relay output to control external devices		
Installation	Assign IP address: using ARP/ or Via RS-232 or IP Installer		
Software Upgrade	Local or Remote software upgradable using FTP Custom web contents updated via FTP & Telnet		
System Requirements	Standard browser such as Microsoft IE4.x or 5.x or above, and Netscape Navigator 4.x running on Win95/98/NT, Linux, etc.		
Security	Three-layer Password Protection		
Operating Temperature	5 ~50 C (40 ~ 125 F)		
Operating Humidity	20 ~80 %		
Input Voltage	AC 9V, 1A or DC 10 ~ 24 V, 1A		
Power Consumption	<10 watts		
Dimension	243 (W) X 44.5(H) X 153 (L) mm		
Weight	0.93 kg, excluding power supply		

In the interest of continuing product improvement, PIXORD Corporation reserves the right to change the product specifications without notice.

PIXORD NVS Ability	Size	Resolution		File Size(Byte)			Frames/Sec
		NTSC	PAL	Low(24)	Default(16)	High(8)	
Single Mode	Large	704*480	704*576	11K	18K	28K	3
	Normal	352*240	352*250	4K	8K	10K	30
	Small	176*112	176*144	2K	3K	4K	30
Quad Mode	Normal	4*352*240	4*352*250	12K	24K	40K	3





PIXORD Corporation
5F-1, No. 857, jinggou Rd., Taoyuan City,
TaoYuan, Taiwan, R.O.C.
TEL:886-3-3166102~3
FAX:886-3-3166105
<http://www.pixord.com>
E-mail: marketing@pixord.com

Distributed By: