



Quick Installation Guide

IAP-620 Series

Industrial Wireless LAN Access Point

Introduction

IAP-620 / IAP-620+ series are reliable 802.11 a/b/g/n WLAN Access Point with 2 ports LAN. It supports 802.1X and MAC filters for security control. It can be configured to operate in AP/Bridge/Repeater/AP-Client mode. You are able to configure IAP-620 / IAP-620+ series by WEB interface via LAN port or WLAN interface. IAP-620 / IAP-620+ series provide dual Ethernet ports in switch mode, so that you can use Daisy Chain to reduce the usage of Ethernet switch ports. In addition, IAP-620+ also provides P.D. feature on ETH2 which is fully compliant with IEEE802.3af PoE P.D. specification. Therefore, IAP-620 / IAP-620+ series are one of the best communication solutions for wireless applications on the industrial network.

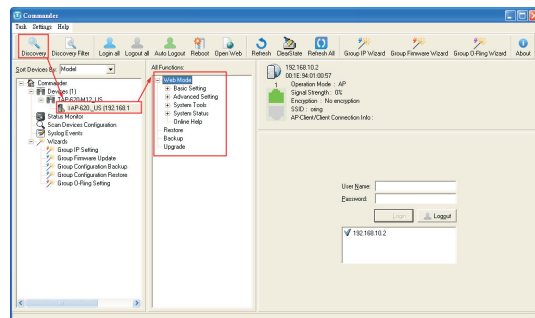
Features

- High Speed Air Connectivity: WLAN interface support up to 300Mbps link speed
- Highly Security Capability: WEP/WPA/WPA-PSK(TKIP,AES)/WPA2/WPA2-PSK(TKIP,AES)/802.1X Authentication supported
- Support X-Roaming < 100 ms
- Support wireless load balance
- Support AP/Client/Bridge/AP-Client Mode
- Switch Mode Supported: Daisy Chain support to reduce usage of switch ports
- Dual redundant Ethernet port support redundant mode (Recovery time < 10ms)
- Secured Management by HTTPS
- Fully Compliant with IEEE802.3af (Power Device at ETH2, PoE Models)
- Wireless connecting status monitoring
- Event Warning by Syslog, Email, SNMP Trap, Relay output and Beeper
- 1KV isolation for PoE P.D. port of IAP-620+
- Rigid IP-30 housing design
- DIN-Rail and Wall-mount enabled

Open-Vision

IAP-620/IAP-620+ can also be configure through ORing's Windows utility Open-Vision

- Step 1: Open the commander and click "Discover", the AP devices will show on the list.
- Step 2: Choose your access point, and it will show the AP function tree. Simultaneity, you can login and then set the AP.



Specifications

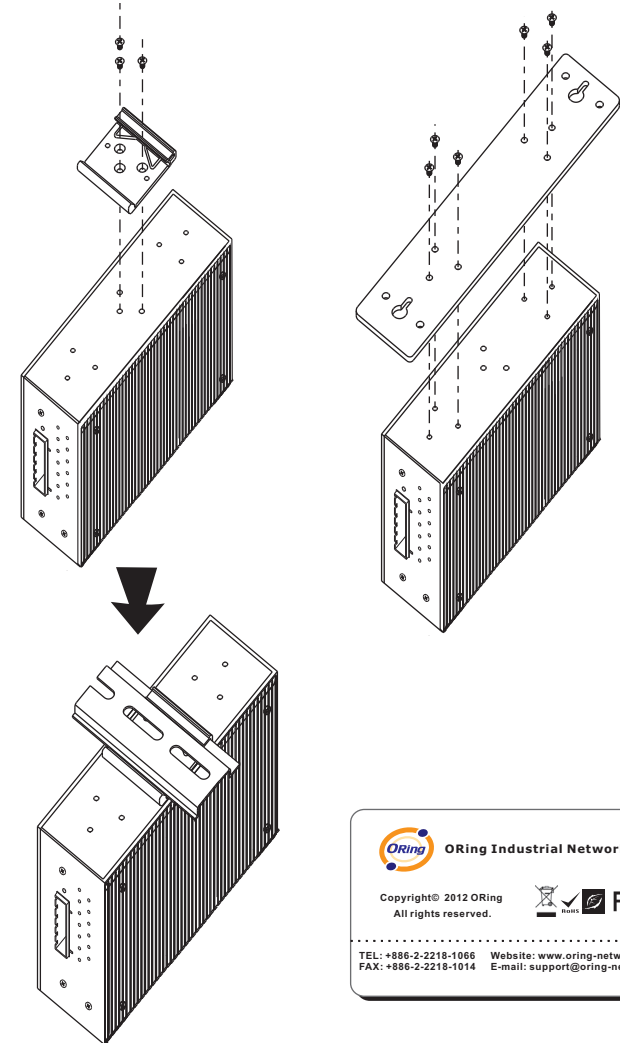
ORing WLAN Access Point Model	IAP-620	IAP-620+
Physical Ports		
10/100Base-T(X) Ports in RJ45 Auto MDI/MDIX	2	
PoE P.D Port		Present at ETH2 Fully compliant with IEEE 802.3af Power Device specification Over load & short circuit protection Isolation Voltage: 1000 VDC min. Isolation Resistance: 10 ⁹ ohms min
WLAN Interface		
Operating Mode	AP/Client/Bridge/AP-Client	
Antenna Connector	2 x External reverse SMA type antenna connector	
Modulation	IEEE802.11a/n: OFDM with BPSK, QPSK, 16QAM, 64QAM IEEE802.11b: CCK, DQPSK, DSSSS IEEE802.11g/n: OFDM with BPSK, QPSK, 16QAM, 64QAM	
Frequency Band	America/FCC: 2.412~2.462 GHz (11 channels) 5.180~5.240 GHz & 5.745~5.825 GHz (9 channels) Europe CE/ETSI: 2.412~2.472 GHz (13 channels) 5.180~5.240 GHz (4 channels) Japan(JP): 2.412~2.484 GHz (13 Channels) 5.180~5.240 GHz (4 channels) Canada(CA): 2.412~2.462 GHz (11 channels) 5.180~5.240 GHz & 5.745~5.825 GHz (9 channel)	
Transmission Rate	802.11b: 1/2/5.5/11 Mbps; 802.11a/g: 6/9/12/18/24/36/48/54 Mbps 802.11n(40MHz): UP to 300 Mbps	
Transmit Power	802.11a: 13dBm ±1.5dBm 802.11b: 16dBm ±1.5dBm 802.11g: 14dBm ±1.5dBm 802.11n(2.4G@20MHz): 13dBm ±1.5dBm 802.11n(2.4G@40MHz): 12dBm ±1.5dBm 802.11n(5G@20MHz): 12dBm ±1.5dBm 802.11n(5G@40MHz): 12dBm ±1.5dBm	
Receiver Sensitivity	802.11a: -68dBm ±2dBm@54Mbps 802.11b: -82dBm ±2dBm@11Mbps 802.11g: -68dBm ±2dBm@54Mbps 802.11n(2.4G@20MHz, MCS15): -64dBm ±2dBm 802.11n(2.4G@40MHz, MCS15): -60dBm ±2dBm 802.11n(5G@20MHz, MCS15): -64dBm ±2dBm 802.11n(5G@40MHz, MCS15): -60dBm ±2dBm	
Encryption Security	WEP: (64-bit, 128-bit key supported) WPA: 802.11(WEP and AES encryption) WPA-PSK (256-bit key pre-shared key supported) 802.1X Authentication supported TKIP encryption	
Wireless Security	SSID broadcast disable	
Protocol Support		
Protocol	ARP, BOOTP, DHCP, DNS, HTTP, IP, ICMP, SNMP, TCP, UDP, RADIUS, SNMP, STP (IEEE 802.1D)	
LED Indicators		
Power Indicator	PWR 1(2)(PoE) / Ready: Red On: Power is on and booting up. Green On: Power is on and functioning Normally.	
10/100Base-T(X) RJ45 port indicator	Green for port Link/Act at 100Mbps. Amber for port Link/Act at 10Mbps.	
WLAN LED	WLAN Link /ACT: Green: Link, Orange : Poor signal Green for WLAN Strength: 1<25%, 2<50%, 3<75%, 4<100%	
Fault	Red for Ethernet link down or power down indicator	
Fault contact		
Relay	Relay output to carry capacity of 1A at 24VDC	
Power		
Redundant Input power	Dual DC inputs. 12~48VDC on 6-pin terminal block	
Power consumption(Typ.)	6 Watts	
Reverse polarity protection	Present	
Overload current protection	Present	
Physical Characteristic		
Enclosure	IP-30	
Dimension (W x D x H)	54.1(W) x 106.1(D) x 145.4(H) mm (2.13 x 4.18 x 5.72 inch.)	
Weight (g)	800 g	804 g
Environmental		
Storage Temperature	-40 to 85°C (-40 to 185°F)	
Operating Temperature	-10 to 60°C (-14 to 140°F)	
Operating Humidity	5% to 95% Non-condensing	

Regulatory Approvals	
EMI	FCC Part 15, CISPR (EN55022) class A
EMS	EN61000-4-2 (ESD), EN61000-4-3 (RS), EN61000-4-4 (EFT), EN61000-4-5 (Surge), EN1000-4-6(CS), EN61000-4-8, EN61000-4-11
Shock	IEC60068-2-27
Free Fall	IEC60068-2-32
Vibration	IEC60068-2-6
Safety	EN60950-1
Warranty	3 years

Installation

DIN-Rail Install Step

Wall-mounted Install Step



ORing Industrial Networking Corp.

Copyright© 2012 ORing
All rights reserved.

TEL: +886-2-2218-1066 Website: www.oring-networking.com
FAX: +886-2-2218-1014 E-mail: support@oring-networking.com



Quick Installation Guide

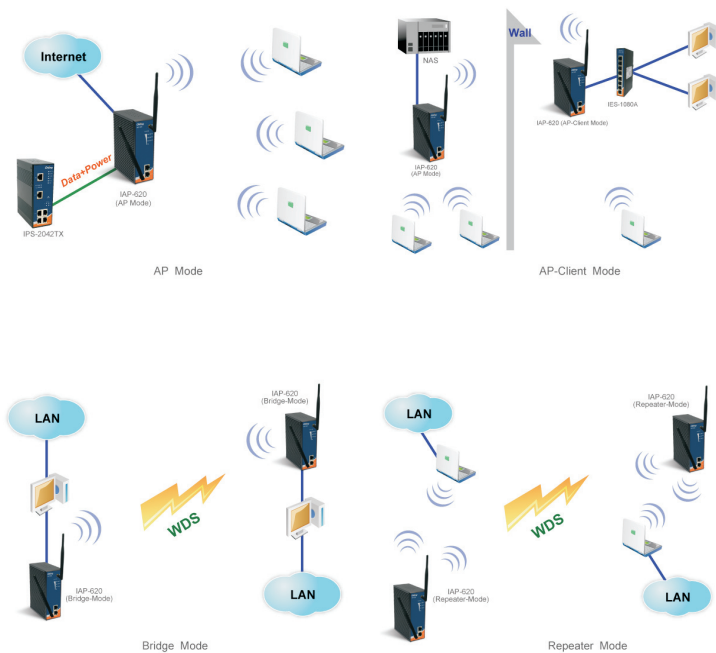
IAP-620 Series

Industrial Wireless LAN Access Point

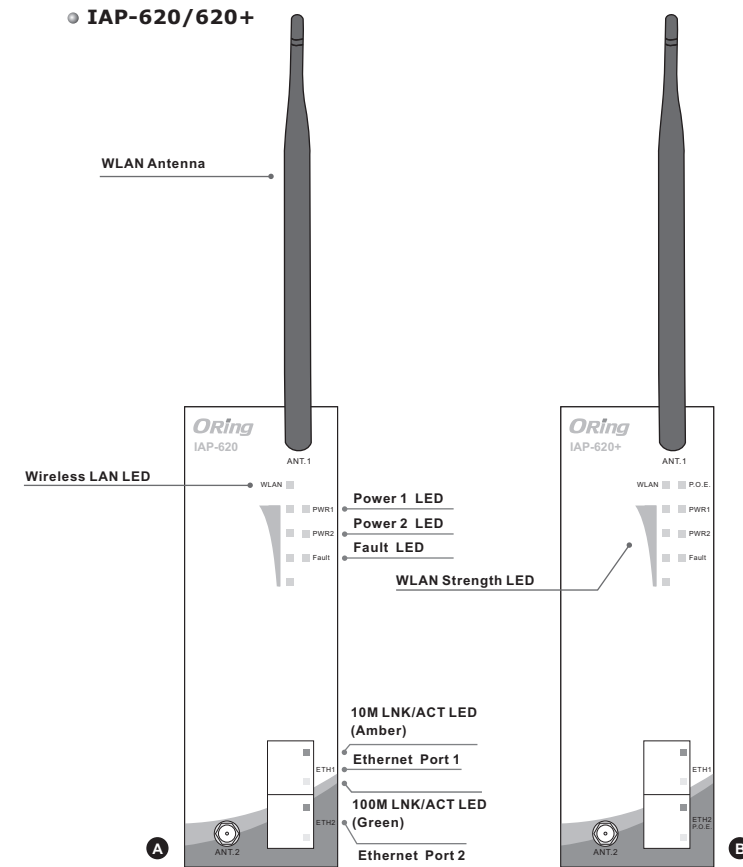
Applications

In practical operation of wireless access point, Windows utility (Open-Vision) is supported. This utility is very helpful for you to search and configure IP of access point on the industrial network. In addition, the wireless access point support various kinds of operation modes include AP/ Bridge/Repeater/AP-Client mode. IAP-620 / IAP-620+ series also support PoE P.D. feature to extend the layout up to 100 meters. You can build up the wireless network easily.

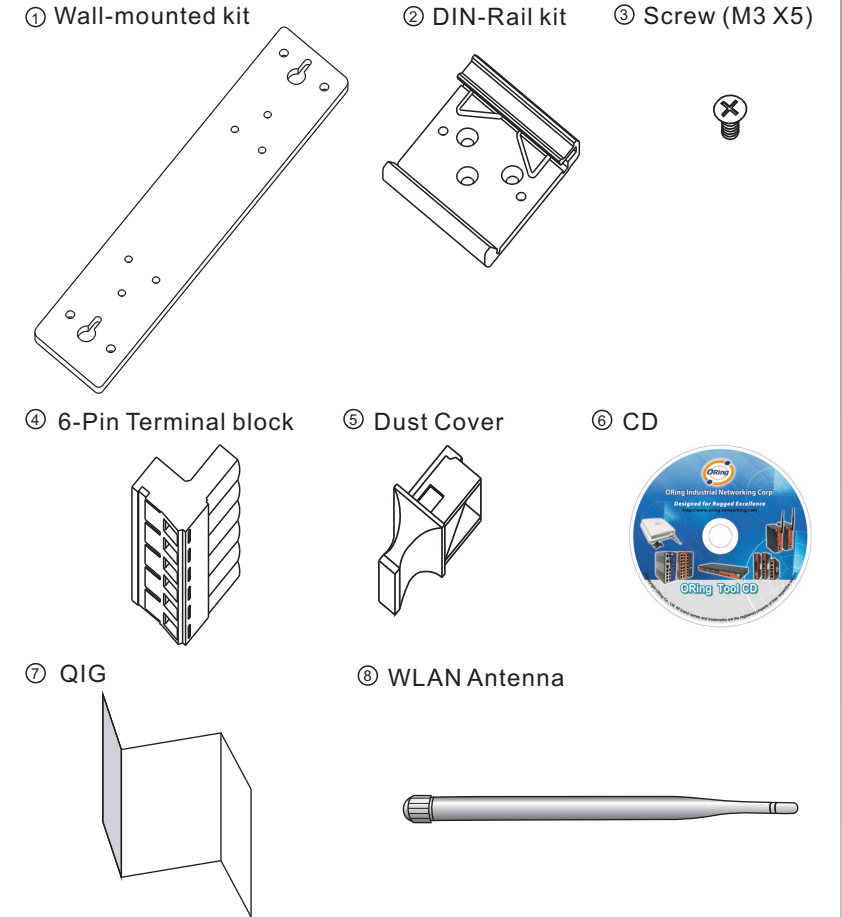
Various kinds of operation modes



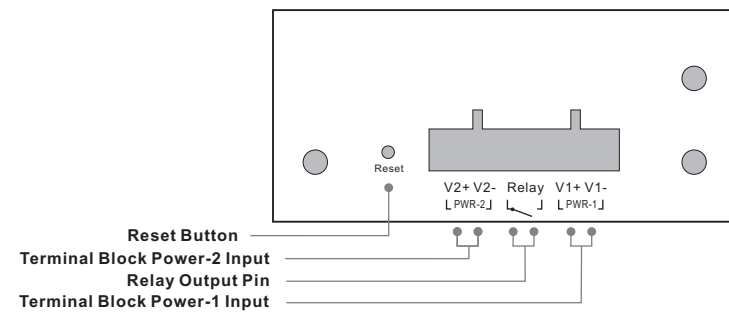
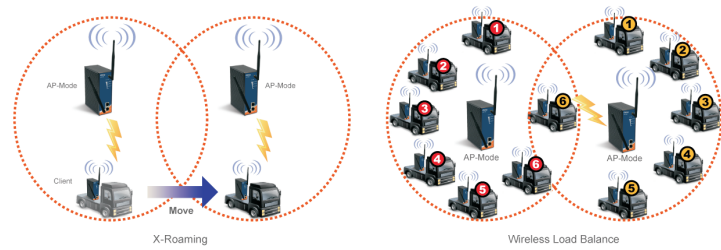
Front Panel



Accessory



Power Connection Guide



Packing list

Model name	Front Panel	Description	Accessory
IAP-620_US	A	Industrial IEEE 802.11 a/b/g/n wireless access point with 2x10/100Base-T(X), US band	OX 1, OX 1, OX 6, OX 1, OX 2, OX 1, OX 1, OX 2
IAP-620_EU	A	Industrial IEEE 802.11 a/b/g/n wireless access point with 2x10/100Base-T(X), EU band	OX 1, OX 1, OX 6, OX 1, OX 2, OX 1, OX 1, OX 2
IAP-620_JP	A	Industrial IEEE 802.11 a/b/g/n wireless access point with 2x10/100Base-T(X), JP band	OX 1, OX 1, OX 6, OX 1, OX 2, OX 1, OX 1, OX 2
IAP-620_CA	A	Industrial IEEE 802.11 a/b/g/n wireless access point with 2x10/100Base-T(X), CA band	OX 1, OX 1, OX 6, OX 1, OX 2, OX 1, OX 1, OX 2
IAP-620+_US	B	Industrial IEEE 802.11 a/b/g/n wireless access point with 2x10/100Base-T(X), 1-port PoE P.D., US band	OX 1, OX 1, OX 6, OX 1, OX 2, OX 1, OX 1, OX 2
IAP-620+_EU	B	Industrial IEEE 802.11 a/b/g/n wireless access point with 2x10/100Base-T(X), 1-port PoE P.D., EU band	OX 1, OX 1, OX 6, OX 1, OX 2, OX 1, OX 1, OX 2
IAP-620+_JP	B	Industrial IEEE 802.11 a/b/g/n wireless access point with 2x10/100Base-T(X), 1-port PoE P.D., JP band	OX 1, OX 1, OX 6, OX 1, OX 2, OX 1, OX 1, OX 2
IAP-620+_CA	B	Industrial IEEE 802.11 a/b/g/n wireless access point with 2x10/100Base-T(X), 1-port PoE P.D., CA band	OX 1, OX 1, OX 6, OX 1, OX 2, OX 1, OX 1, OX 2